

1/267 Princes Highway Corrimal NSW

2 1 1

modern | open | entertaining

Step inside this bright and airy renovated apartment ideally located in the heart of Corrimal, offering a seamless open-plan layout and a striking modern design with quality finishes. Thoughtfully designed for low-maintenance living, it features generous indoor-outdoor flow and a light-filled atmosphere. Perfect for those seeking a stylish, contemporary home in a central and convenient location.

what you will love?

> fully renovated unit showcasing a sleek modern design with high-quality finishes

[For full version visit the website](https://www.mcneice.com.au/8680246)

Type : Unit

View : <https://www.mcneice.com.au/8680246>

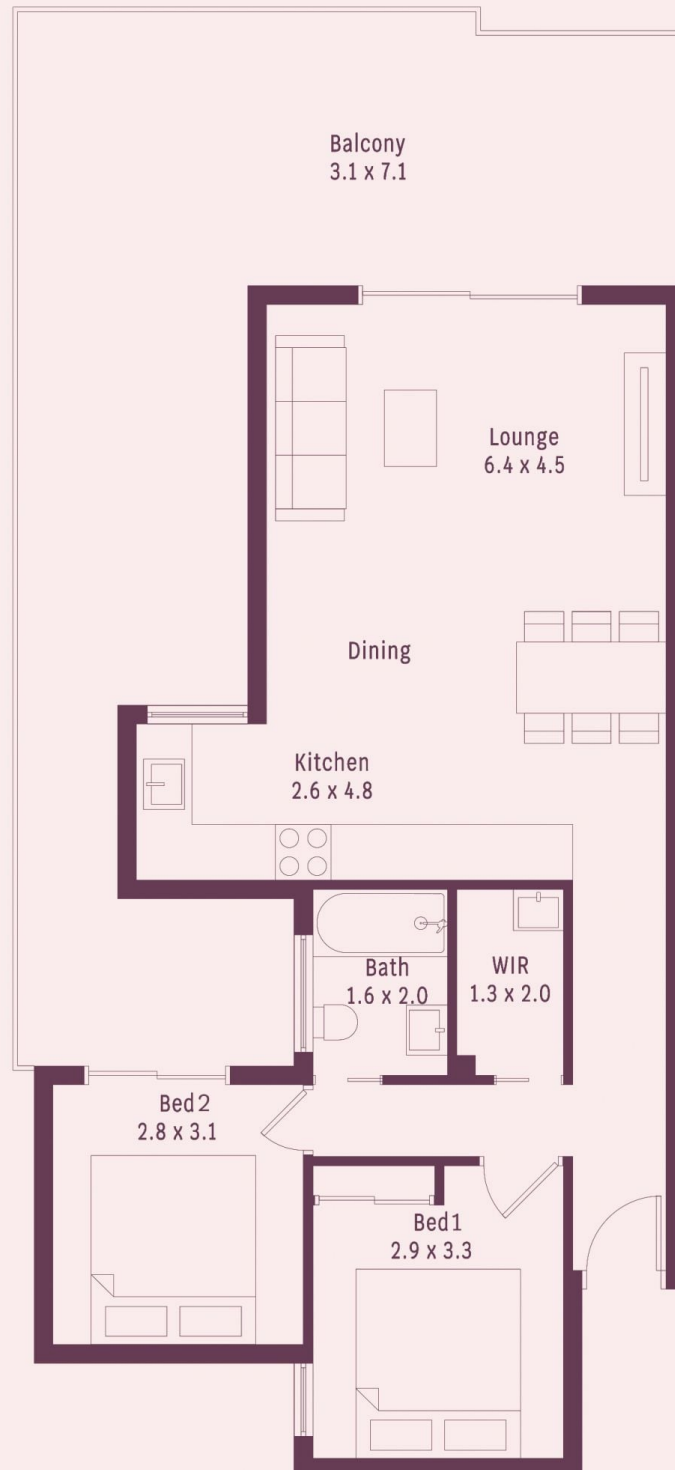


Mia Atkinson
02 4284 8536



Erin McPhillips
02 4284 8536

1/267 Princes Highway, Corrimal



HOUSE INTERNAL AREA 128m²

Plans shown are for presentation purposes and are not part of any legal document.

Dimensions are approximate