

11 Ashley Avenue Farmborough Heights NSW

3 1 1

contemporary | peaceful | family

Capturing a captivating view across the treetops to both Mount Keira and Kembla, this modern three bedroom home offers an ideal family escape. With modern and bright interiors and two entertaining decks, enjoy indoor to outdoor flow and calm weekends in.

what you will love...

- > charming facade framed by manicured gardens and with level access to entry
- > open plan living and dining space with high ceilings, timber floors, and views to the mountains

[For full version visit the website](https://www.mcneice.com.au)

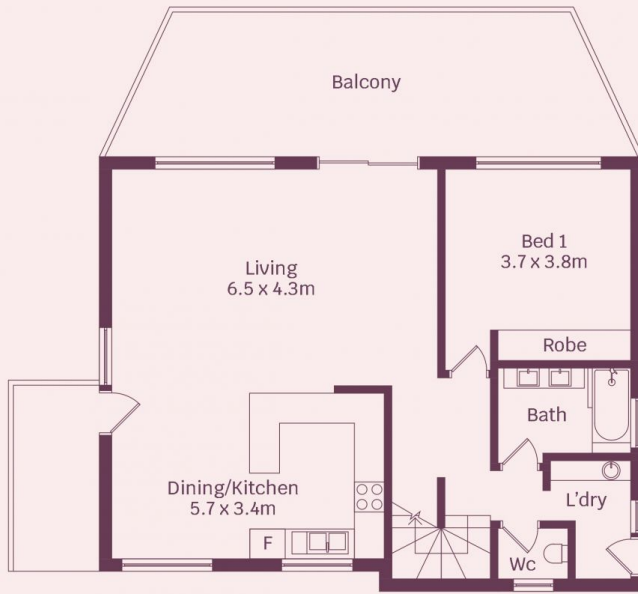
Type : House
Price : Contact Agent
Land Size : 562 sqm
View : <https://www.mcneice.com.au/8679845>



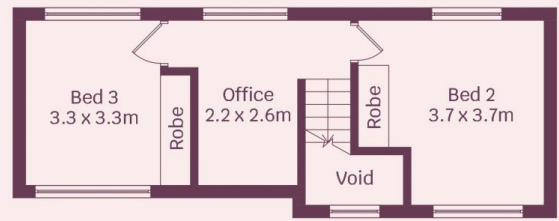
David Greenwood
02 4284 8536



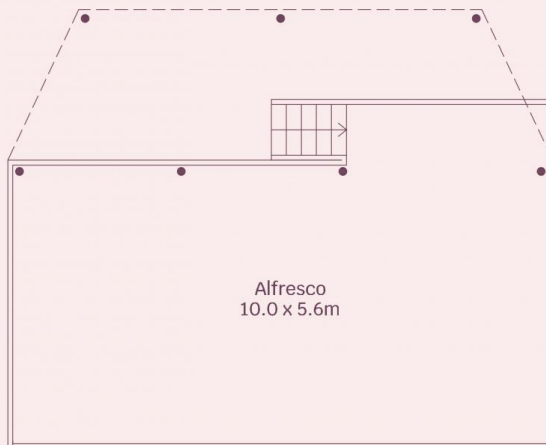
Blake Torresan
02 4284 8536



Ground Floor



First Floor



Lower Ground Floor



HOUSE INTERNAL AREA 118m²

Plans shown are for presentation purposes and are not part of any legal document. Dimensions are approximate