



## 23 Seddon Street Figtree NSW

4 2 1

modern | easycare | family

Featuring thoughtfully designed, light-filled spaces and a seamless low-maintenance indoor-outdoor flow, this home beautifully blends timeless character with modern living, capturing the essence of a relaxed Figtree lifestyle. Warm and inviting throughout, it offers both comfort and style, all while being tucked away in a convenient family friendly location.

what you will love...

> contemporary facade with established gardens and hedging and immaculate front lawns

**Type** : House  
**Land Size** : 223 sqm  
**View** : <https://www.mcneice.com.au/8656574>



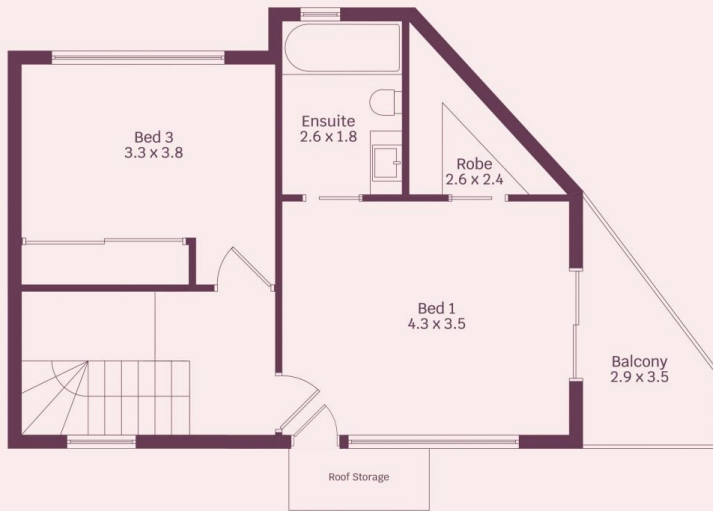
**Hilary Moy**  
02 4284 8536



**Erin McPhillips**  
02 4284 8536

[For full version visit the website](https://www.mcneice.com.au)

# 23 Seddon Street, Figtree



HOUSE INTERNAL AREA 133m<sup>2</sup>

HOUSE OVERALL AREA 152m<sup>2</sup>

Plans shown are for presentation purposes and are not part of any legal document.

Dimensions are approximate