



## 52B Keerong Avenue Russell Vale NSW

opportunity | privacy | family

Set in a gorgeous tree lined street, this exceptional opportunity in sought-after Russell Vale. This expansive 571m<sup>2</sup> vacant block offers a tranquil setting, including a DA approved family home designed by local award winning Debu Studio's. Conveniently set less than 5 minutes to Woonona amenities and 15 minutes to Wollongong CBD.

what you will love?

- > 571m<sup>2</sup> land with broad appeal to home buyers and astute investors
- > occupying a prime position alongside high-quality family

[For full version visit the website](https://www.mcneice.com.au/8647857)

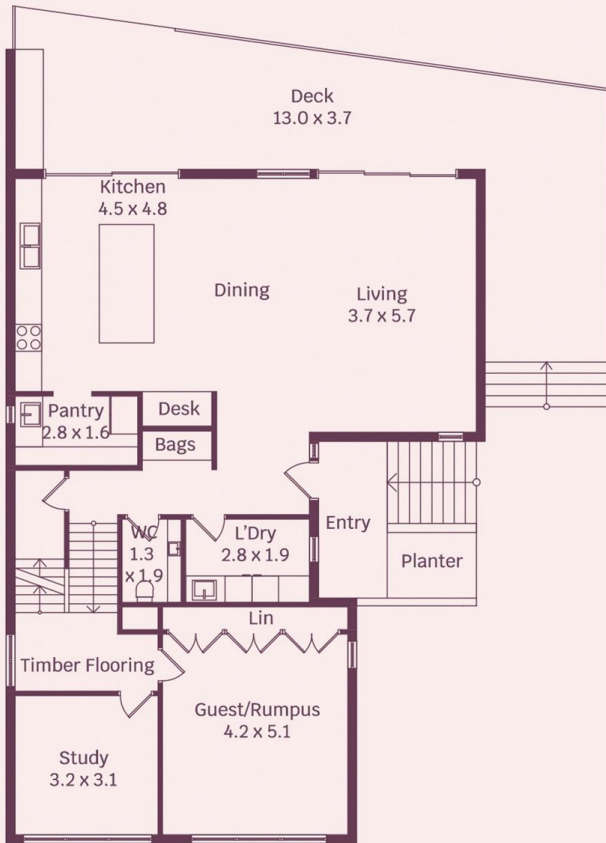
**Type** : Land  
**Price** : \$ 802,500  
**Land Size** : 571 sqm  
**View** : <https://www.mcneice.com.au/8647857>



**Troy McNeice**  
02 4284 8536



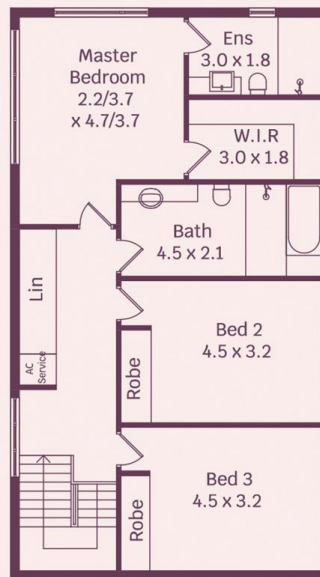
**Joshua De Smuszko**  
02 4284 8536



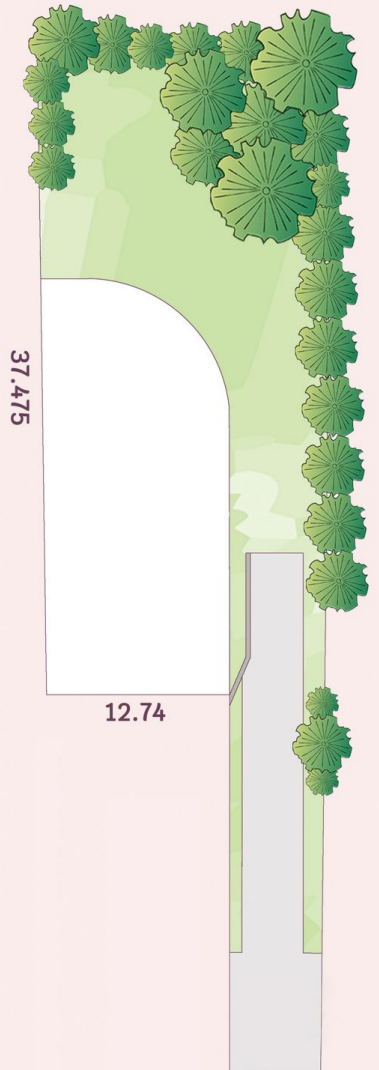
Ground Floor



Basement



First Floor



HOUSE INTERNAL AREA 204m<sup>2</sup>  
HOUSE OVERALL AREA 252 m<sup>2</sup>

Plans shown are for presentation purposes and are not part of any legal document.  
Dimensions are approximate