



## 48 York Road Russell Vale NSW

3 2 3

private | practical | well-appointed

Backing directly onto the peaceful greenery of John Parker Reserve, this beautifully maintained home offers privacy, space and everyday functionality within a thoughtfully updated setting. Combining a classic brick structure with modern exterior renovations and well-planned interiors, the home delivers a relaxed indoor outdoor lifestyle with generous parking, versatile workspaces and a spacious backyard designed for both entertaining and practicality.

what you will love?

> solid brick home enhanced by a contemporary cement

[For full version visit the website](https://www.mcneice.com.au)

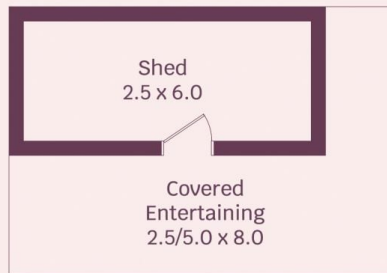
**Type** : House  
**Price** : \$ 1,600,000  
**Land Size** : 712 sqm  
**View** : <https://www.mcneice.com.au/8645723>



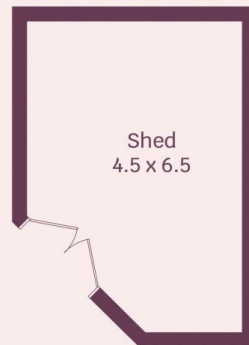
**David Hyslop**  
02 4284 8536



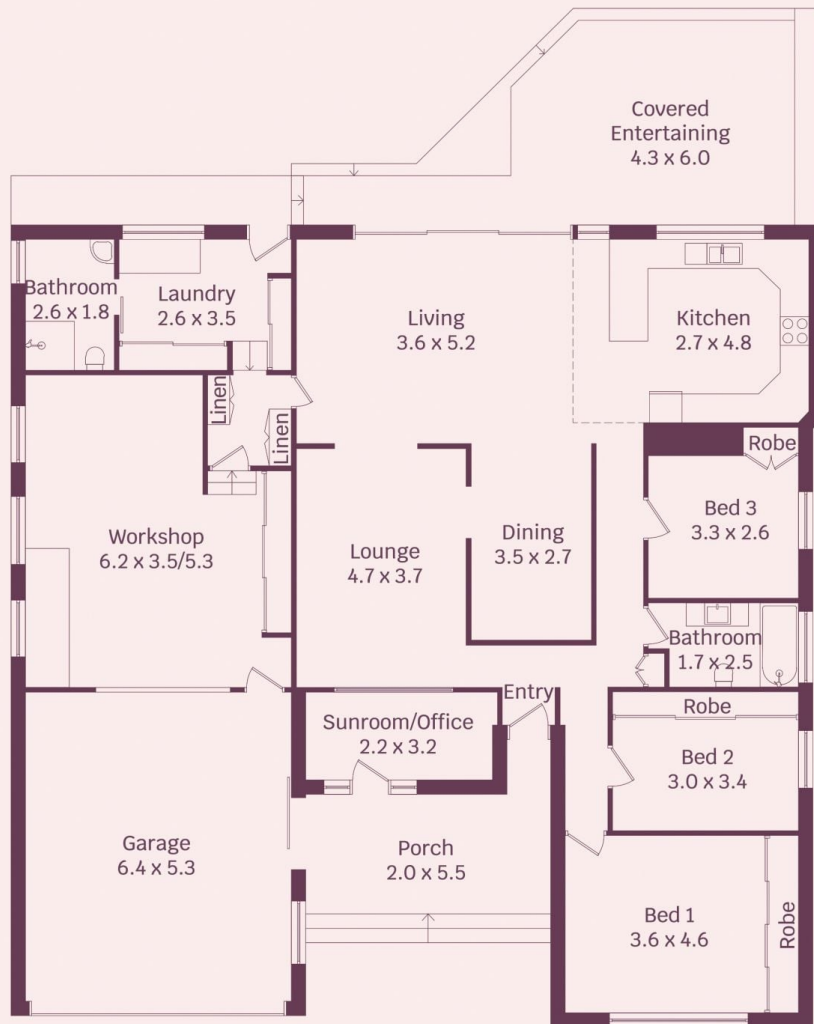
**Tyler Hoggard**  
02 4284 8536



Not In Position



Not In Position



HOUSE INTERNAL AREA 185m<sup>2</sup>

Plans shown are for presentation purposes and are not part of any legal document.  
Dimensions are approximate