



248 Lawrence Hargrave Drive Coalcliff NSW

2 1 1

aspect | oasis | lifestyle

Step inside this charming coastal cottage, perfectly positioned on an elevated block to capture cooling sea breezes and a peaceful natural outlook. Designed as a true sanctuary, the home invites relaxation from the moment you arrive. A spacious light-filled living area is enhanced by large windows that frame the surrounding greenery and draw the outdoors in, creating an atmosphere of calm, warmth and effortless coastal living.

what you will love?

> character-filled cottage set on an expansive 866 sqm

[For full version visit the website](https://www.mcneice.com.au)

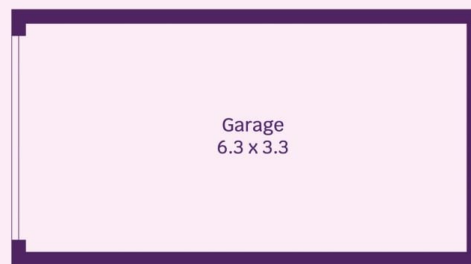
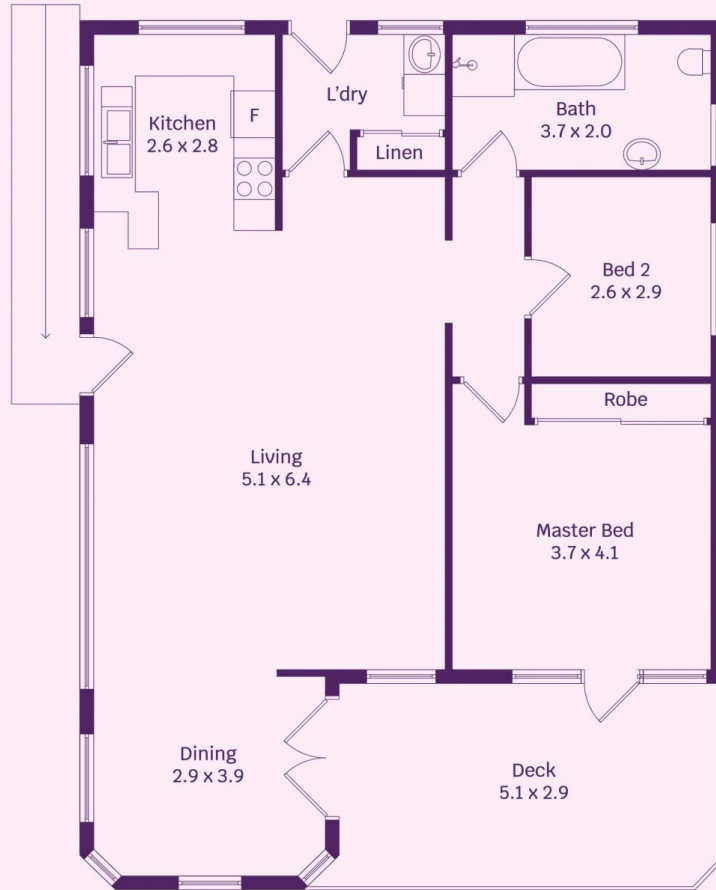
Type : House
Price : Price Guide \$1,590,000 - \$1,630,000
Land Size : 866 sqm
View : <https://www.mcneice.com.au/8619872>



David Hyslop
02 4284 8536



Tyler Hoggard
02 4284 8536



Not In Position

Plans shown are for presentation purposes and are not part of any legal document. Dimensions are approximate