

2/107 Campbell Street Woonona NSW

3 2 2

lifestyle | size | location

Perfectly balancing contemporary design with light-filled interiors, this stylish townhouse delivers generous proportions, effortless indoor-outdoor living and a prime lifestyle location just moments from the village and beach.

what you will love?

- > light-filled open plan living offer perfect indoor-outdoor connection
- > sleek gloss-white kitchen featuring Caesarstone benchtops and stainless-steel appliances
- > seamless flow from all living spaces to a fully

Type : Townhouse

Price : \$ 1,070,000

View : <https://www.mcneice.com.au/8605888>

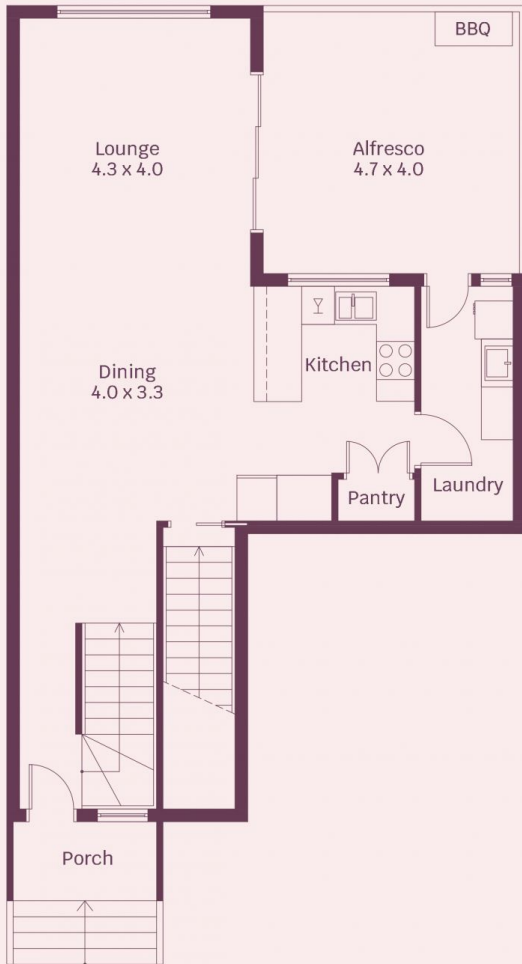


Joshua De Smuszko
02 4284 8536

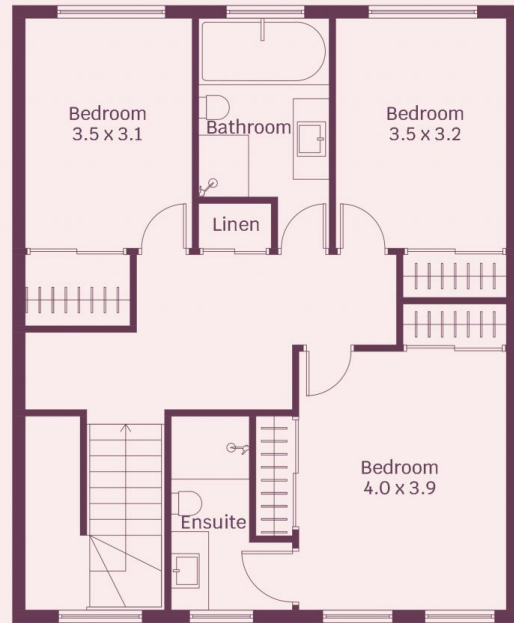


Troy McNeice
02 4284 8536

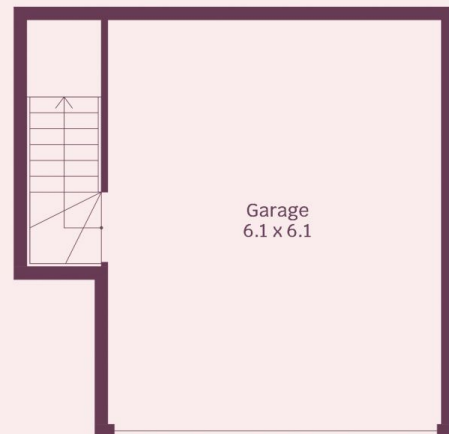
[For full version visit the website](https://www.mcneice.com.au)



Entry Level



First Floor



Ground Floor

Plans shown are for presentation purposes and are not part of any legal document. Dimensions are approximate