



20 Armagh Parade Thirroul NSW

3 1 2

coastal | effortless | refined

Nestled in a private oasis of lush gardens and natural greenery, this beautifully maintained family home captures sweeping, ever-changing ocean vistas. With a spacious and versatile layout designed for effortless indoor-outdoor living, it's an entertainer's dream offering a relaxed coastal lifestyle with refined charm.

what you will love...

- > flowing dual-level design connects seamlessly to multiple alfresco decks
- > contemporary kitchen with granite benchtops and

[For full version visit the website](https://www.mcneice.com.au)

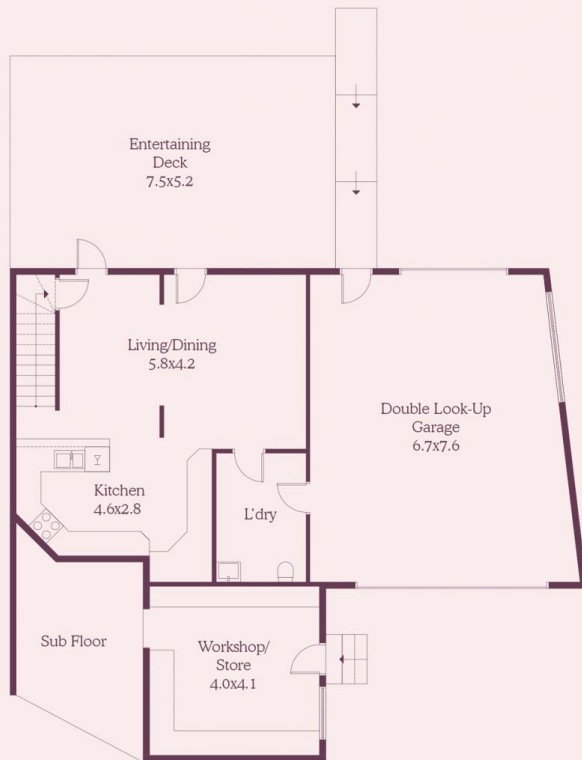
Type : House
Building Size : 290 sqm
Land Size : 773 sqm
View : <https://www.mcneice.com.au/8595782>



Mia Atkinson
02 4284 8536



Erin McPhillips
02 4284 8536



Lower Ground Floor



Ground Floor



HOUSE INTERNAL AREA 208m²
HOUSE OVERALL AREA 290m²

Plans shown are for presentation purposes and
are not part of any legal document.
Dimensions are approximate

