



34 The Grove Austinmer NSW

4 2 6

architectural | private | light-filled

Hidden behind a timber gate and embraced by established trees, this beautifully layered split level home is a sanctuary of warmth, space and natural light just moments from the beach. Rich timber textures, soaring ceilings and expansive windows create an immediate sense of calm, while multiple living zones and generous outdoor areas make it perfectly suited to family life and effortless entertaining. Thoughtfully designed to connect indoors with nature, every level of the home offers its own sense of retreat, privacy and functionality.

what you will love?

[For full version visit the website](https://www.mcneice.com.au/8579186)

Type : House
Price : \$ 4,000,000
Land Size : 1918 sqm
View : <https://www.mcneice.com.au/8579186>



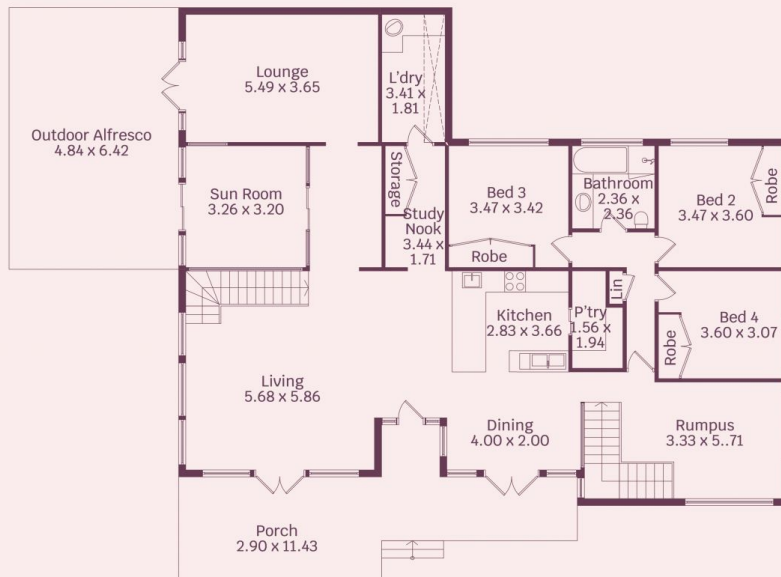
David Hyslop
02 4284 8536



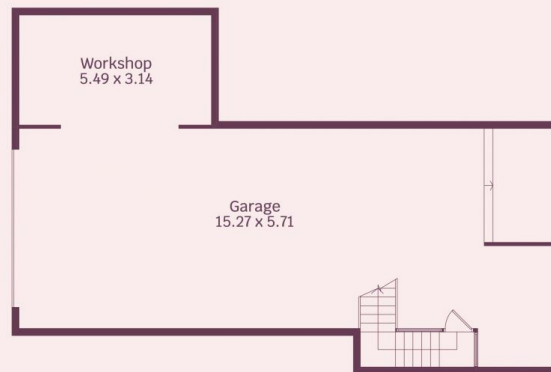
Jessika Welsh
02 4284 8536



First Floor



Ground Floor



Lower Ground Floor



HOUSE INTERNAL AREA 450m²

HOUSE OVERALL AREA 547m²

Plans shown are for presentation purposes and are not part of any legal document.

Dimensions are approximate