



3/49 Campbell Street Woonona NSW

3 2 2

sleek | location | private

With an ultra-sleek design and high-end finishes, this truly impressive three bedroom townhouse features beautiful neutral interiors. The east and west aspect allow for an abundance of natural light throughout. The generous open plan living space flows perfectly to a private, low-maintenance outdoor entertainment space with spa. With every small detail carefully designed throughout, this is the perfect blend of modern comfort paired with a premium coastal lifestyle. The home also comes equipped with energy efficient features including solar, battery and electric vehicle charger. Bulli beach and parks are within an easy walk.

**Type** : Townhouse

**Price** : \$ 1,350,000

**View** : <https://www.mcneice.com.au/8563236>



**Danny Peterson**  
02 4284 8536

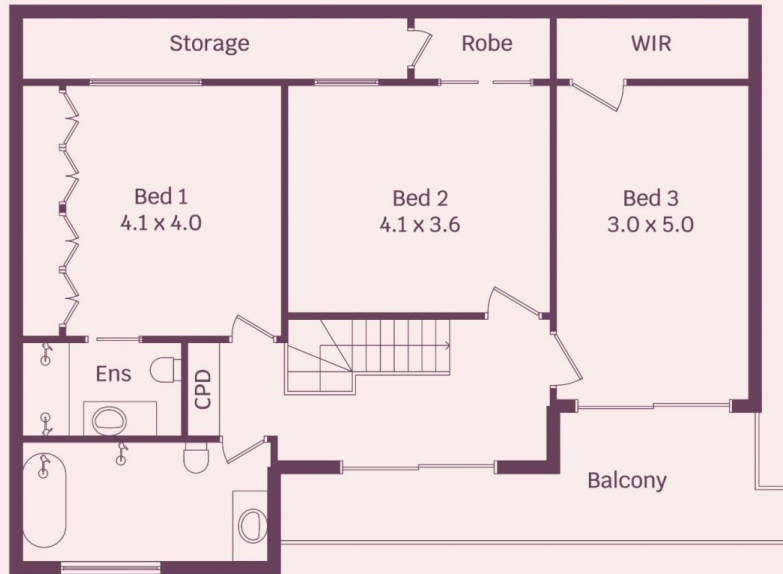


**Liam Mulcahy**  
02 4284 8536

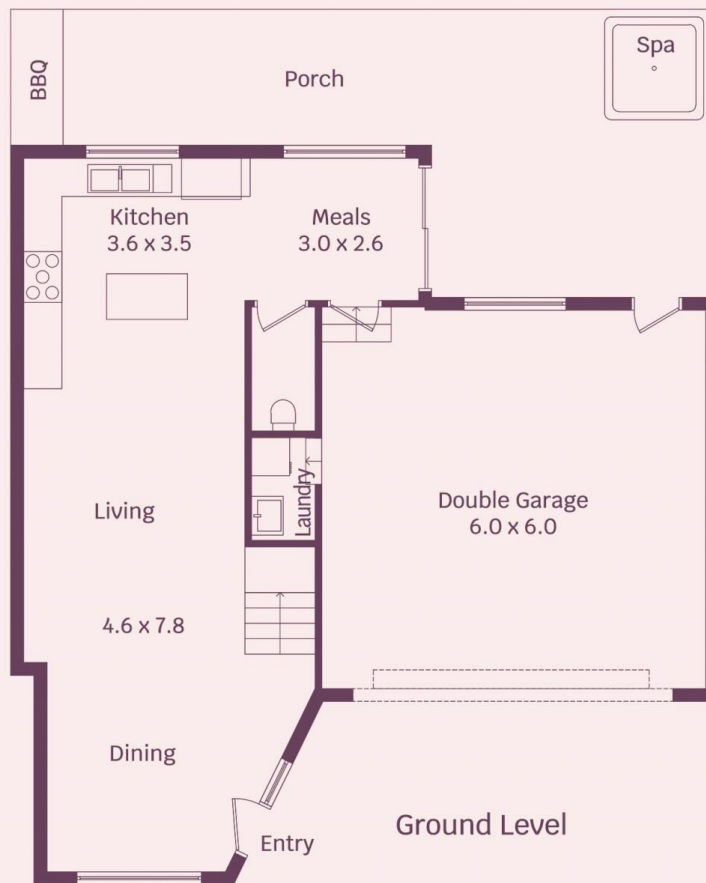
[For full version visit the website](https://www.mcneice.com.au)

3/49 Campbell Street, Woonona

mcneice ✕



Upper Level



Ground Level



HOUSE INTERNAL AREA 192m<sup>2</sup>

HOUSE OVERALL AREA 232m<sup>2</sup>

Plans shown are for presentation purposes and are not part of any legal document.

Dimensions are approximate