



134 Lakeview Parade Primbee NSW

7 2 5

dual living | investment | potential

Positioned along the picturesque Lakeview Parade in Primbee, this expansive seven-bedroom home captures uninterrupted north-facing views across the lake and toward the Illawarra escarpment. Offering space, versatility, and outstanding investment potential, it's perfectly suited to large families, multi-generational living, or investors seeking dual-income opportunities. The home provides immediate comfort with exciting scope to renovate or redevelop (STCA), all set on a substantial 785 sqm parcel of land.

what you will love?

[For full version visit the website](https://www.mcneice.com.au)

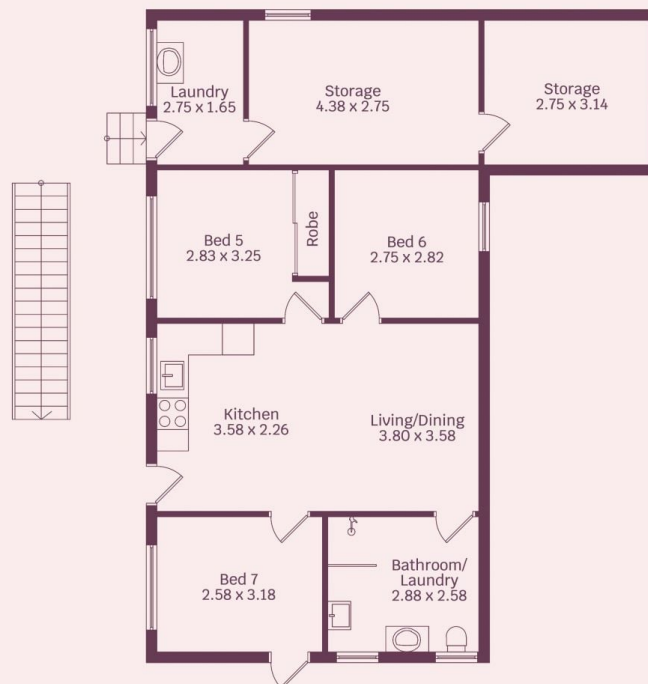
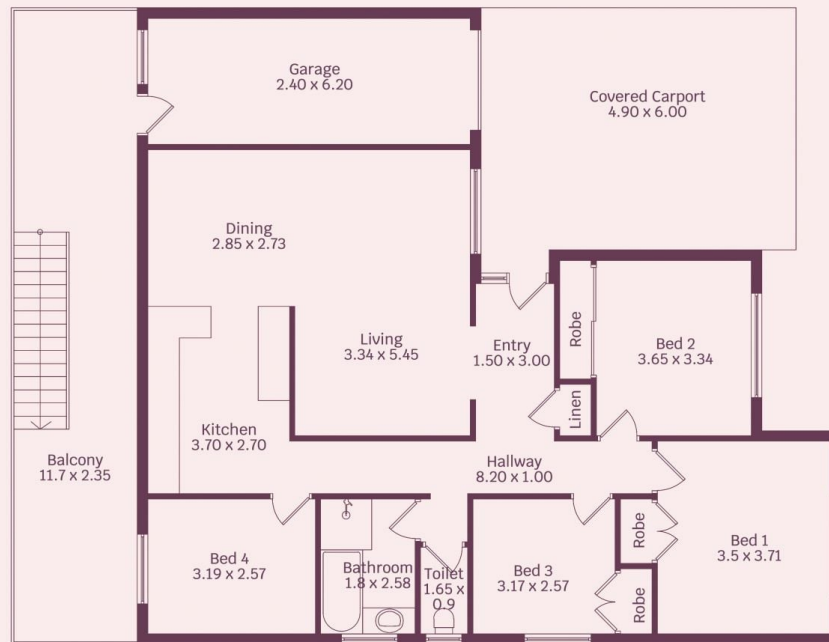
Type : House
Price : \$ 1,652,000
Land Size : 785 sqm
View : <https://www.mcneice.com.au/8560520>



Jessika Welsh
02 4284 8536



David Hyslop
02 4284 8536



HOUSE INTERNAL AREA 196m²

HOUSE OVERALL AREA 253m²

Plans shown are for presentation purposes and are not part of any legal document.

Dimensions are approximate