



45 Robinsville Crescent Thirroul NSW

5 3 2

designer | serene | elevated

Expertly designed and completed in late twenty twenty-five, this exceptional family residence blends architectural elegance with considered functionality and relaxed coastal living. Positioned in an elevated Thirroul enclave, it captures sweeping ocean and escarpment views, while expansive interiors, refined finishes and flexible spaces evolve seamlessly with your family. Every detail has been crafted to perfection, framed by lush private gardens that create a true sense of sanctuary.

what you will love...

[For full version visit the website](https://www.mcneice.com.au)

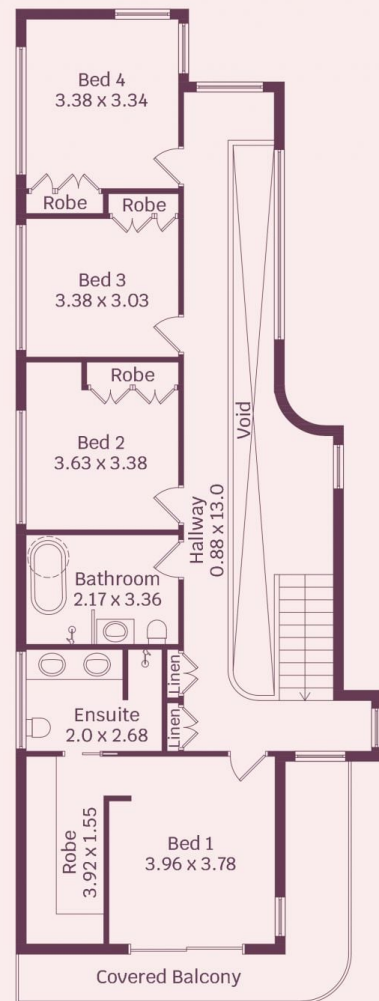
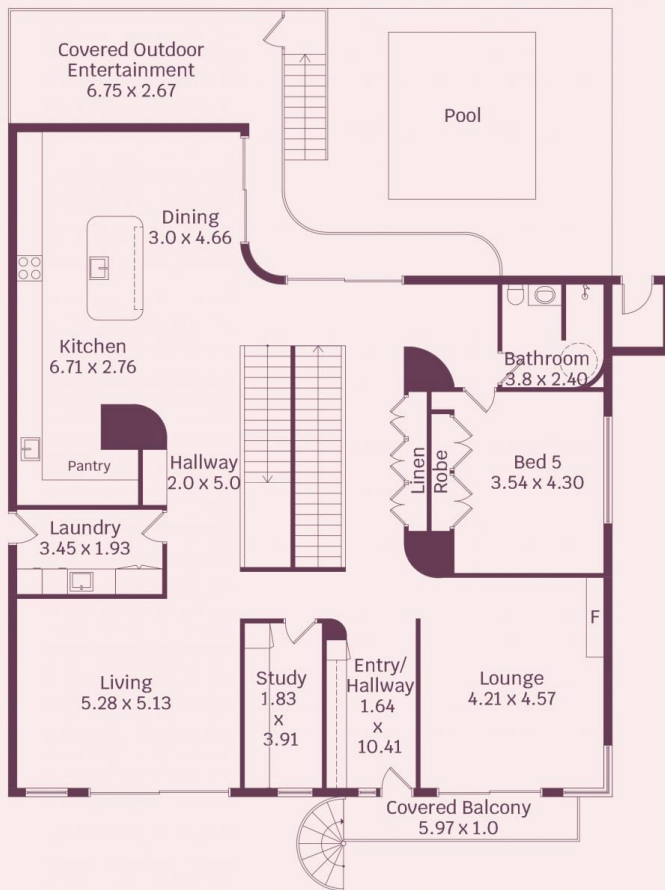
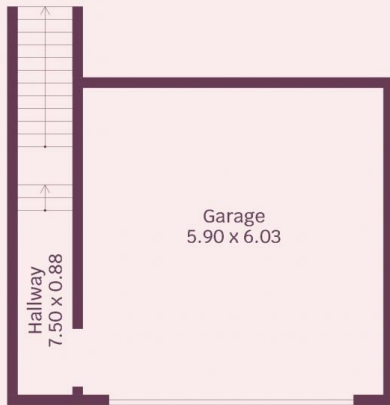
**Type** : House  
**Price** : \$ 3,260,000  
**Land Size** : 649 sqm  
**View** : <https://www.mcneice.com.au/8557021>



**Troy McNeice**  
02 4284 8536



**David Hyslop**  
02 4284 8536



HOUSE INTERNAL AREA 352m<sup>2</sup>  
 HOUSE OVERALL AREA 438m<sup>2</sup>

Plans shown are for presentation purposes and are not part of any legal document.  
 Dimensions are approximate