



1/8 Blacket Street Heathcote NSW

4 2 2

light | space | design

Showcasing striking contemporary design and undeniable street appeal, this prestige residence makes a bold architectural statement while exuding warmth and sophistication. Defined by its clean lines, rich material palette and thoughtful landscaping, the home offers a commanding presence that sets the tone for the refined interiors beyond.

what you will love...

> basking in sun with its northern orientation and exceptional position on this peaceful street

[For full version visit the website](https://www.mcneice.com.au)

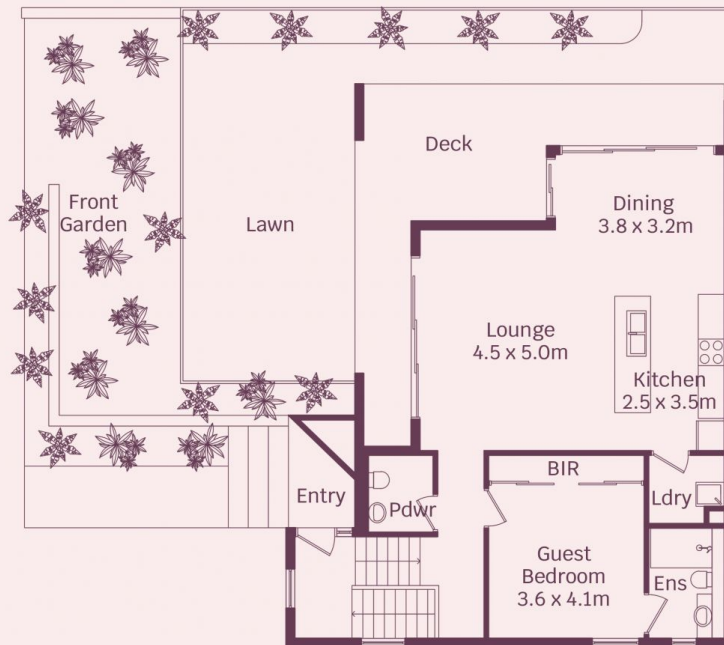
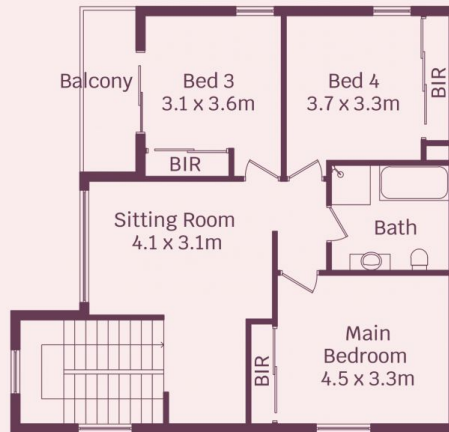
Type : Townhouse
Price : \$ 1,750,000
Building Size : 226 sqm
View : <https://www.mcneice.com.au/8540219>



Guy Hampton
02 4284 8536



Emre Hasdiraz
02 4284 8536



HOUSE INTERNAL AREA 226m²
HOUSE OVERALL AREA 388m²

Plans shown are for presentation purposes and are not part of any legal document.
Dimensions are approximate