



543A Lawrence Hargrave Drive Wombarra NSW

2 2 1

concept | artistry | individuality

Perched on Wombarra's breathtaking coastline this home is a bold expression of artistry, craftsmanship and individuality. Designed and built as a one of a kind architectural statement, this water-facing residence captures the essence of coastal living through an artistic lens. Every corner reveals a story, from the serene courtyard to the ocean-facing rooftop. This is more than a home, it's a living gallery, crafted with imagination and intention.

what you will love?

[For full version visit the website](https://www.mcneice.com.au)

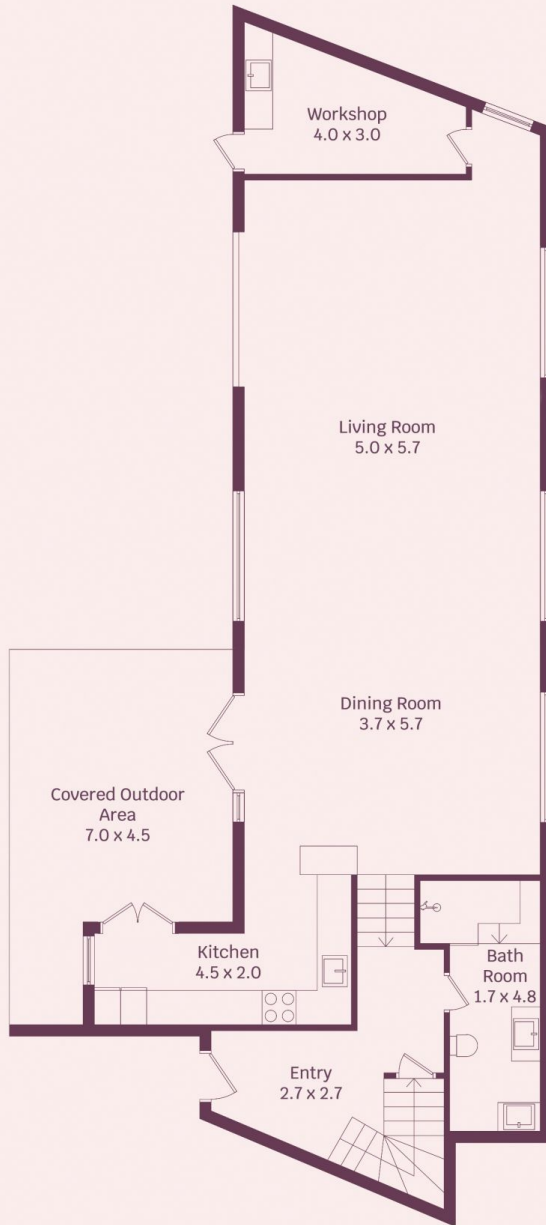
Type : House
Price : \$ 2,020,000
Land Size : 686 sqm
View : <https://www.mcneice.com.au/8524810>



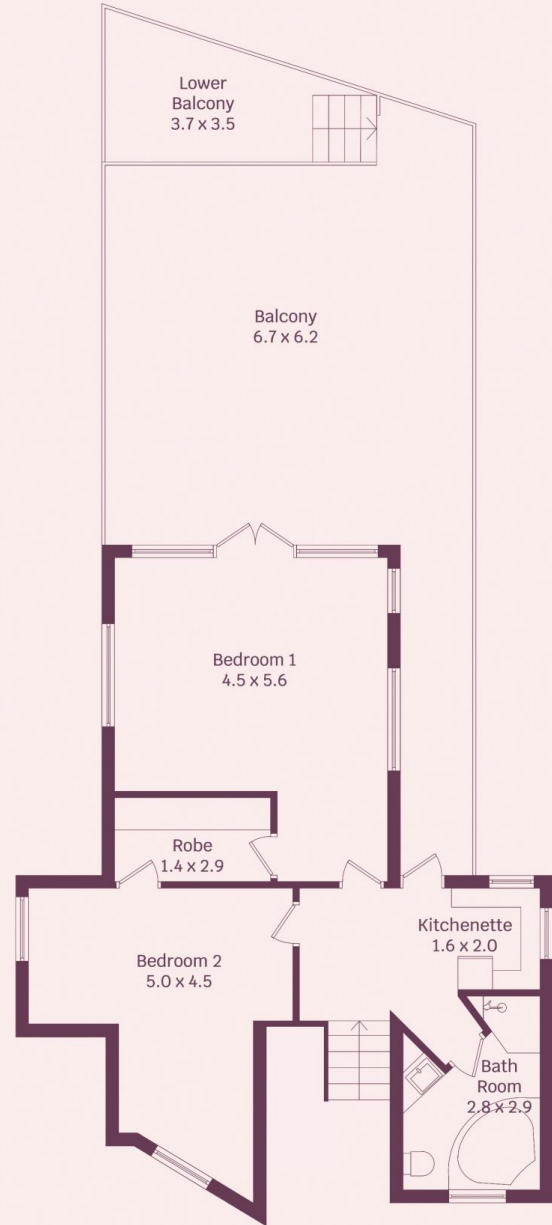
David Hyslop
02 4284 8536



Tyler Hoggard
02 4284 8536



Ground Floor



First Floor



HOUSE INTERNAL AREA 149m²

HOUSE OVERALL AREA 235m²

Plans shown are for presentation purposes and are not part of any legal document.

Dimensions are approximate