



24 St Cloud Crescent Lake Heights NSW

2 🏠 1 🚗

views | land | potential

Set high above the northern shoreline of Lake Illawarra, this rare 896sqm landholding commands one of the region's most spectacular outlooks. From its elevated position, the property captures sweeping panoramas across the shimmering waters, escarpment and coastline; a breath taking backdrop that few can rival.

With generous proportions and versatile potential, the block offers immediate comfort with scope to further enhance or explore future possibilities (STCA). Positioned in a peaceful pocket, the location blends serenity with convenience, just moments from local schools, shop, parks, lakeside walking

Type : House
Price : \$ 905,000
Land Size : 896 sqm
View : <https://www.mcneice.com.au/8501572>



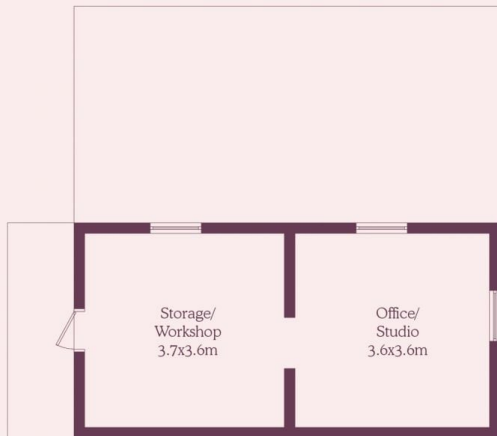
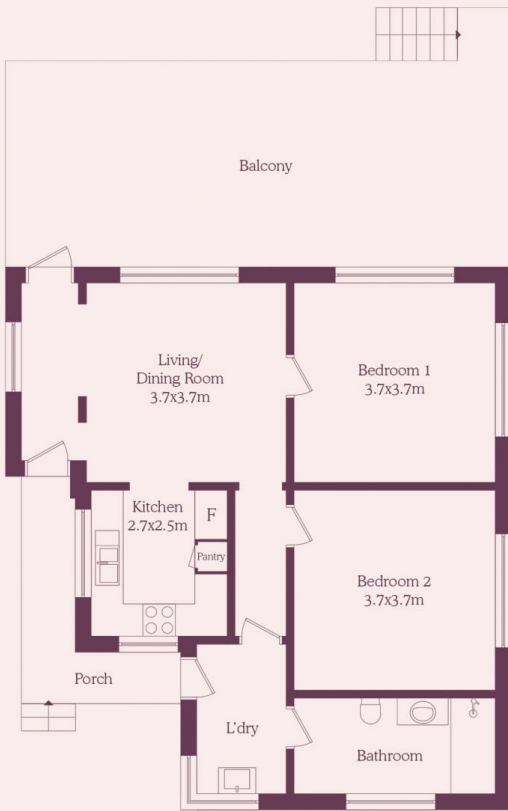
Daniel Mulholland
02 4284 8536



Emre Hasdiraz
02 4284 8536

[For full version visit the website](https://www.mcneice.com.au)

24 St. Cloud Crescent, Lake Heights



(Not Shown In Actual Location, Orientation)



Siteplan
(Not To Scale)



HOUSE INTERNAL AREA 96.4m²
HOUSE OVERALL AREA 144.2m²

Plans shown are for presentation purposes and are not part of any legal document.
Dimensions are approximate