






2/36 George Street Thirroul NSW

3  3  2 

modern | convenience | lifestyle

Thoughtfully designed and located moments away from Thirroul Village, this exceptional townhouse presents the perfect blend of modern elegance and coastal living. With a modern open plan design and north facing courtyard, this home offers an unrivalled lifestyle in a premier position that places you within a stroll of renowned restaurants, shops, cafes, as well as transport.

what you will love...

> spacious open-plan living with seamless indoor-outdoor connection

[For full version visit the website](#)

Type : Townhouse

View : <https://www.mcneice.com.au/8494620>



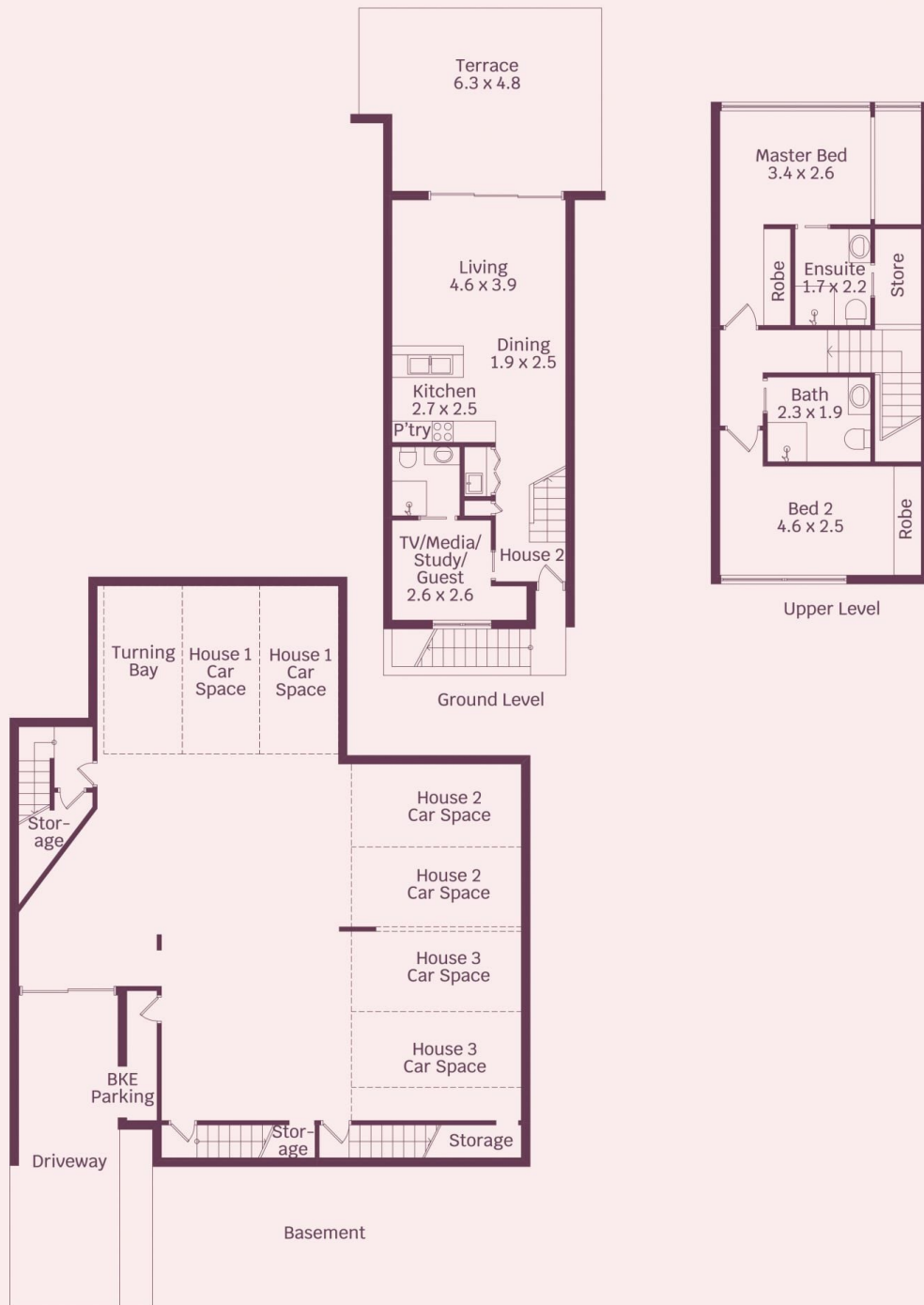
David Hyslop
02 4284 8536



Jessika Welsh
02 4284 8536

2/36 George Street, Thirroul

mcneice 



HOUSE INTERNAL AREA 288m²
HOUSE OVERALL AREA 380m²

Plans shown are for presentation purposes and
are not part of any legal document.
Dimensions are approximate