

641 Princes Highway Russell Vale NSW

3 1 2

character | family | possibilities | community

Blending classic charm and modern conveniences this tastefully updated bungalow presents exciting possibilities to create a superb family home on a large 811sqm allotment with two street frontages.

what you will love...

- > flexible floor plan, separate living spaces or possible fourth bedroom
- > set in a friendly community close to parks, school, transport and café
- > beautifully presented throughout, hardwood flooring and

Type : House
Land Size : 811 sqm
View : <https://www.mcneice.com.au/8488439>

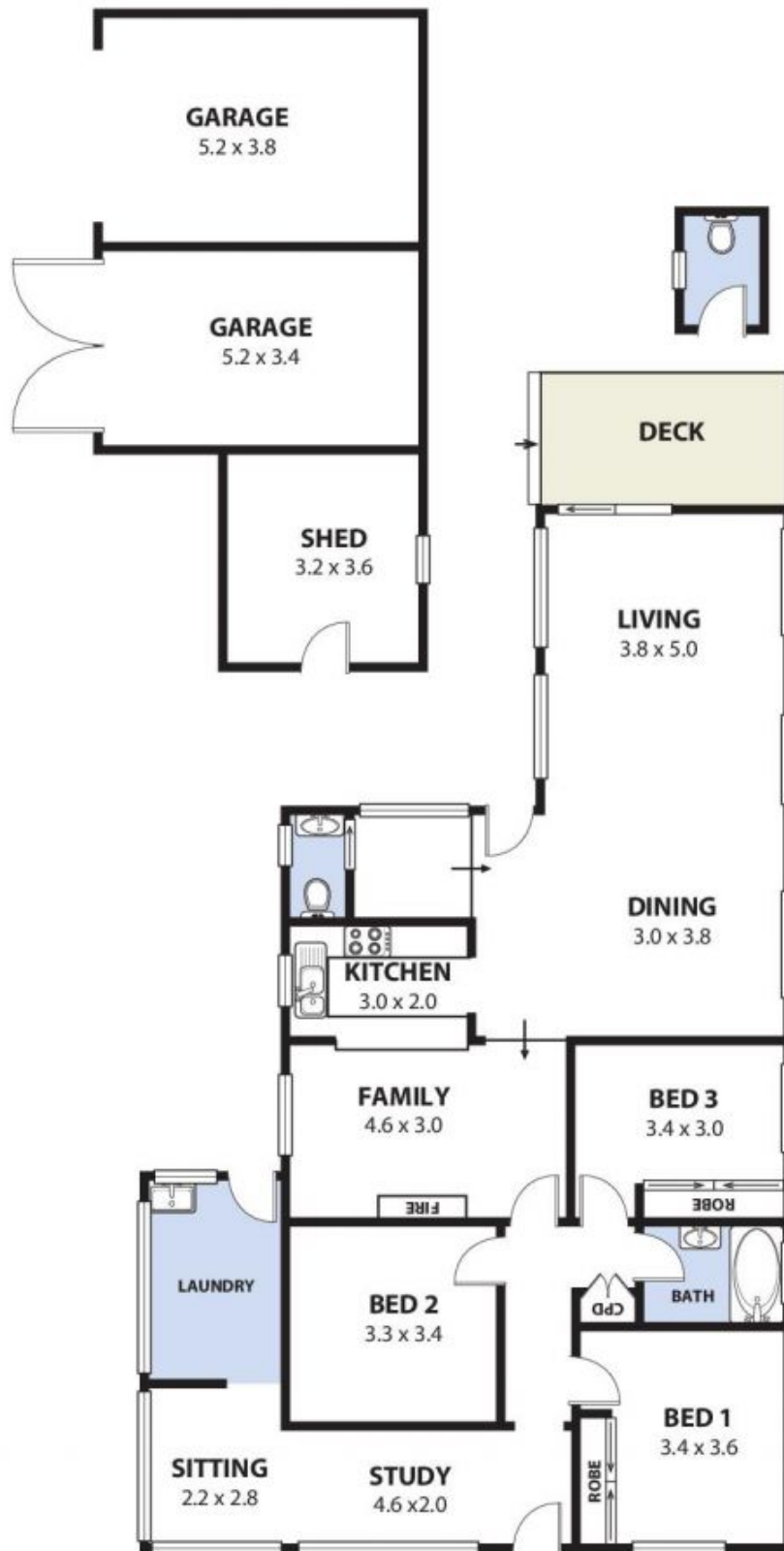


Mia Atkinson
02 4284 8536



Erin McPhillips
02 4284 8536

[For full version visit the website](https://www.mcneice.com.au)



641 Princes Highway Russell Vale

INTERNAL SPACE 162m2 (approx)

Plans shown are for presentation purposes and are not part of any legal document or title and are subject to errors, omissions, inaccuracies and should not be used as sole and accurate reference. Particulars given are for general information only and do not constitute any representation on the part of the vendor or agent. No liability will be accepted.

AR2