



## 7 Bond Street Bellambi NSW

3  1  1 

charm | family | coastal

Tucked away in a peaceful cul-de-sac just moments from the pristine shores of Bellambi Beach, 7 Bond Street offers a rare opportunity to secure a spacious coastal residence rich in timeless character and future potential. Designed with family living in mind, the expansive floor plan delivers generous space. Set on a level 589sqm block with the added advantage of rear lane access, this property is ideal for those seeking space for a boat or caravan.

what you will love...

> three generously sized bedrooms, including the master

[For full version visit the website](https://www.mcneice.com.au/8488426)

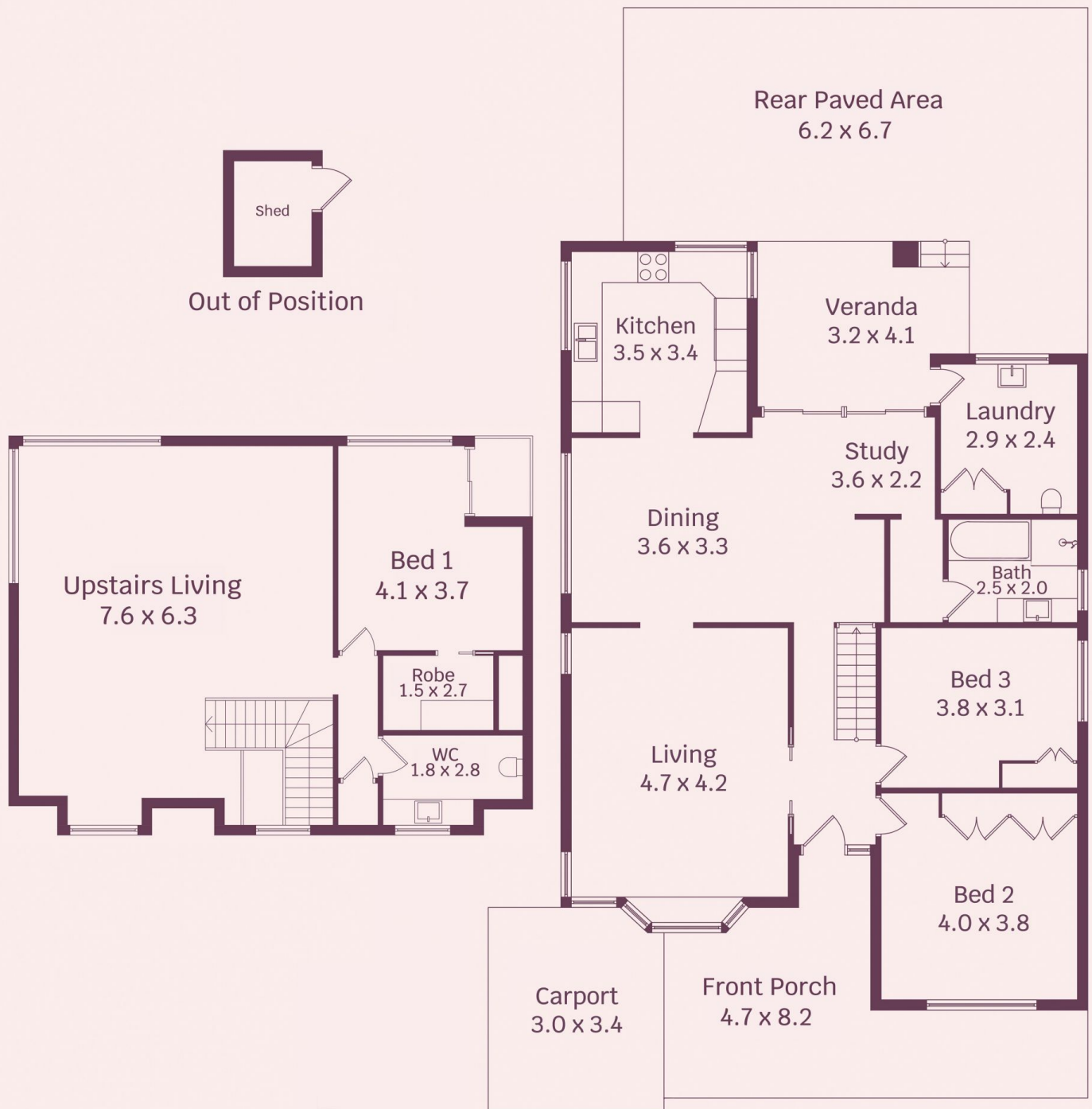
**Type** : House  
**Land Size** : 589 sqm  
**View** : <https://www.mcneice.com.au/8488426>



**Mia Atkinson**  
02 4284 8536



**Erin McPhillips**  
02 4284 8536



HOUSE INTERNAL AREA 162m<sup>2</sup>

HOUSE OVERALL AREA 266m<sup>2</sup>

Plans shown are for presentation purposes and are not part of any legal document.

Dimensions are approximate