



1/12 Bode Avenue North Wollongong NSW

2 1 1

location | light | affordability

North facing aspect with an abundance of natural light, this neat and tidy townhouse has been tastefully presented and is simply ready to enjoy. Well-proportioned, occupying a prime position to the rear of the block in sought after North Wollongong. Only a short walk to popular beaches, Stuart Park, cafes and cycleway.

what you will love?

- > two good-sized bedrooms both featuring built-in wardrobes
- > modernized kitchen with ample storage, breakfast bench,

[For full version visit the website](https://www.mcneice.com.au/8488388)

Type : Townhouse

View : <https://www.mcneice.com.au/8488388>



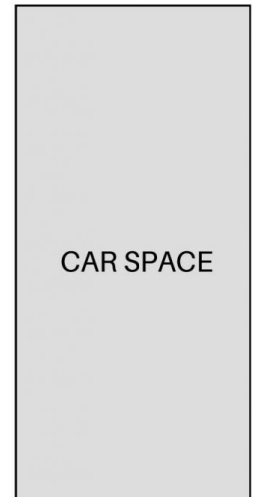
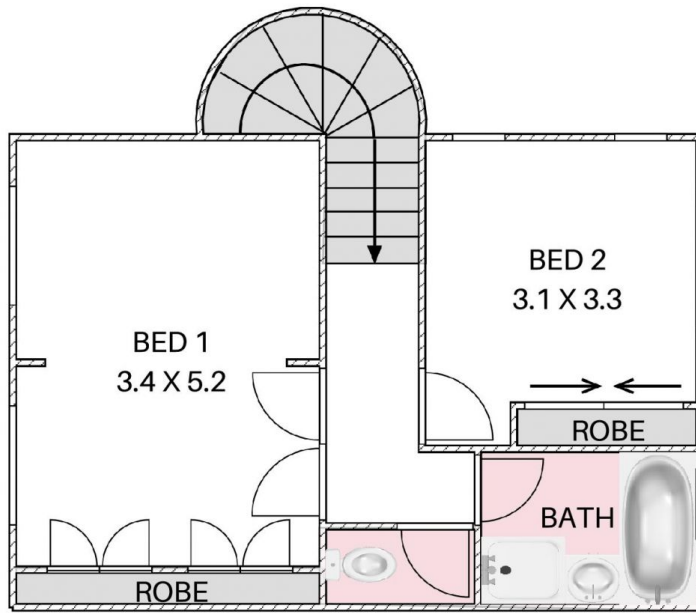
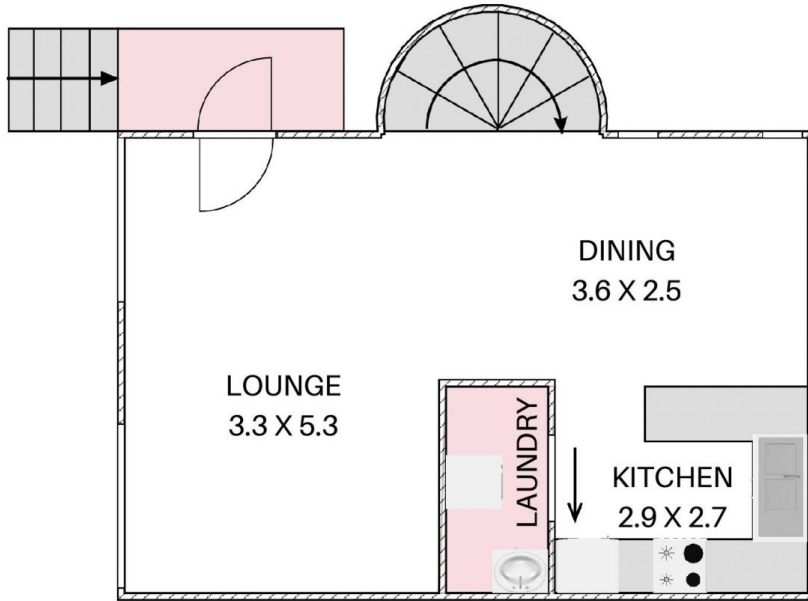
Mia Atkinson  
02 4284 8536



Erin McPhillips  
02 4284 8536

1/12 BODE AVENUE, NORTH WOLLONGONG

+ molenaar  
mcneice



HOUSE TOTAL AREA 111m<sup>2</sup>

Plans shown are for presentation purposes and are not part of any legal document. Dimensions are approximate.

