



55a Atchison Street Wollongong NSW

3 2 3

character | coastal | contemporary

Situated in the heart of Wollongong, within easy walking distance to the center of the city is this charming 3 bedroom cottage. Originally built in the 1920s the home exudes the charm of yesteryear, yet with modern updates throughout. 10ft high ceilings with ornate cornice, and rich timber floors leading you to the high-end entertainer's kitchen, you will fall in love from the minute you arrive.

what you will love?

> circa 1920's three-bedroom character home on a level 497sqm parcel of land

[For full version visit the website](https://www.mcneice.com.au/8488387)

**Type** : House  
**Land Size** : 497 sqm  
**View** : <https://www.mcneice.com.au/8488387>



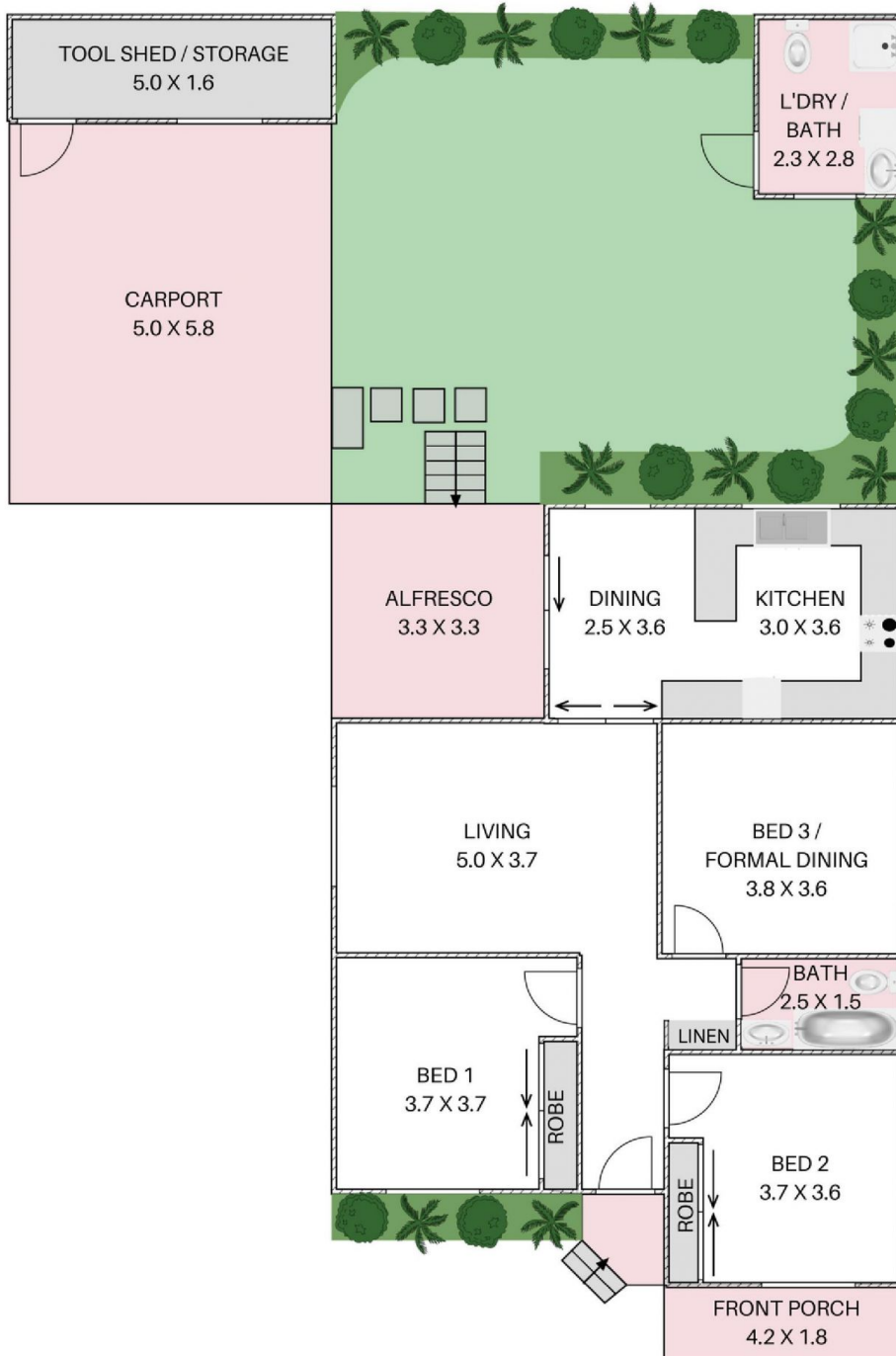
**Mia Atkinson**  
02 4284 8536



**Erin McPhillips**  
02 4284 8536

55A ATCHISON STREET, WOLLONGONG

+ molenaar  
mcneice



HOUSE TOTAL AREA 135.9m<sup>2</sup>

Plans shown are for presentation purposes and are not part of any legal document. Dimensions are approximate.

