



**702/15 Railway Parade Wollongong NSW**

2 🛏 2 🚿 1 🚗

style | light | lifestyle

This north-facing apartment is ideally situated just moments from Wollongong's city centre, offering elevated views of the escarpment and ocean. Featuring a spacious open-plan layout that seamlessly extends to a generous balcony, this residence provides the perfect blend of comfort and convenience right at your doorstep.

what you will love?

- > north-facing aspect capturing abundance of natural light
- > luxurious stone kitchen, stainless steel appliances and gas cooktop

[For full version visit the website](#)

**Type** : Apartment

**View** : <https://www.mcneice.com.au/8488380>



**Mia Atkinson**  
02 4284 8536



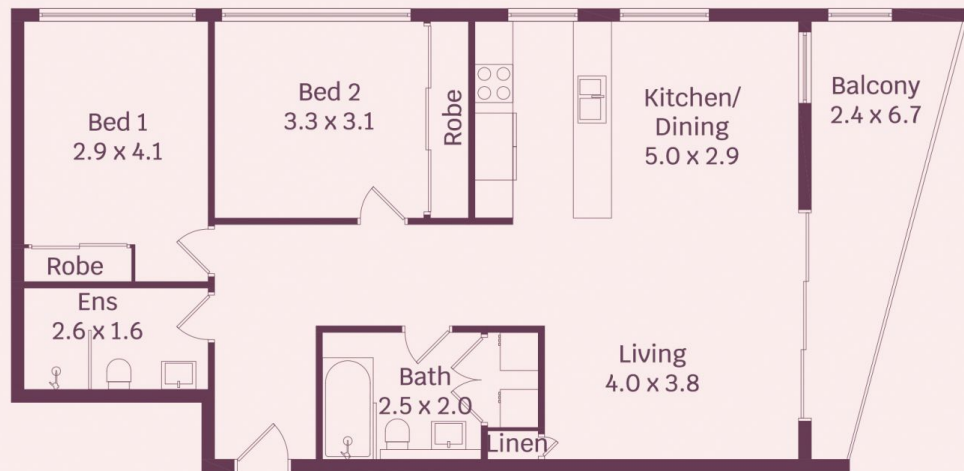
**Erin McPhillips**  
02 4284 8536

molenaar × mcneice

702/15 Railway Parade, Wollongong



Not In Position



HOUSE INTERNAL AREA 89m<sup>2</sup>  
HOUSE OVERALL AREA 112m<sup>2</sup>

Plans shown are for presentation purposes and  
are not part of any legal document.  
Dimensions are approximate