



7 Wilsons Creek Road Helensburgh NSW

3 1 1

character | nature | opportunity

Brimming with yesteryear charm with a stylish twist, this character-filled home has been transformed into a family haven. This home is ready for enjoyment and is conveniently located close to Helensburgh train station. Explore the beautiful natural surroundings and wide open front and backyard.

- > spacious veranda overlooks the quaint leafy street
- > stylish kitchen with ample bench space and storage
- > gorgeous polished timber floorboards and high ceilings throughout
- > three bedrooms with gorgeous nature-filled outlooks

[For full version visit the website](https://www.mcneice.com.au)

Type : House
Land Size : 771 sqm
View : <https://www.mcneice.com.au/8488377>



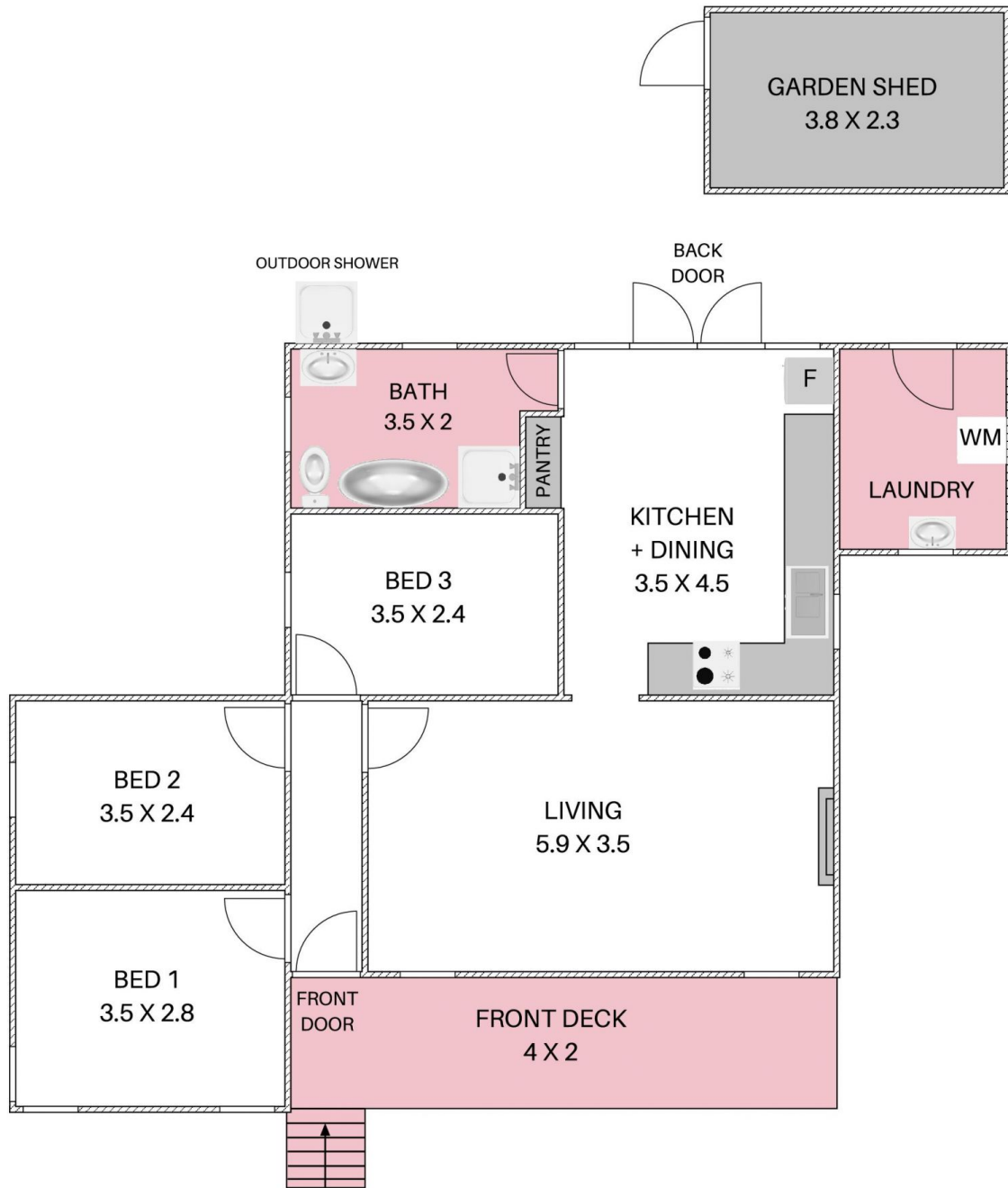
Mia Atkinson
02 4284 8536



Erin McPhillips
02 4284 8536

7 WILSONS CREEK ROAD, HELENSBURGH

+ molenaar
mcneice



HOUSE TOTAL AREA 81m²

Plans shown are for presentation purposes and are not part of any legal document. Dimensions are approximate.

