



52 Lighthorse Drive Woonona NSW

3 1 1

sun drenched | location | lifestyle

Nestled along the picturesque coastline of Woonona, this spacious beach cottage exudes a charming coastal vibe, making it the perfect retreat for families looking for rare rental opportunity. + level walking distance to schools, train station and cafe's

what you will love?

- > three spacious bedrooms
- > renovated modern kitchen with NBN
- > completely level and flat block with large fenced yard
- > open plan living and dining

[For full version visit the website](https://www.mcneice.com.au/8488313)

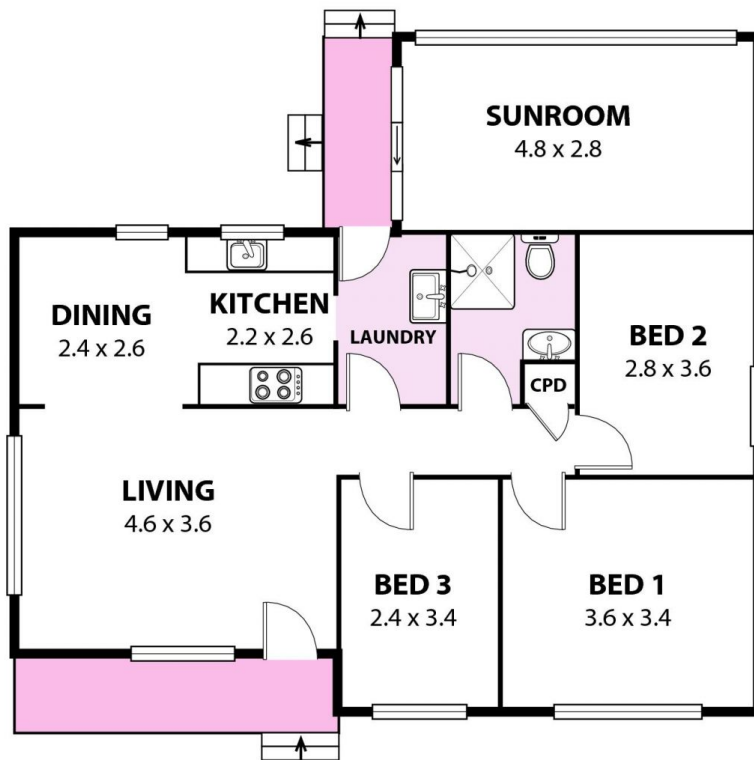
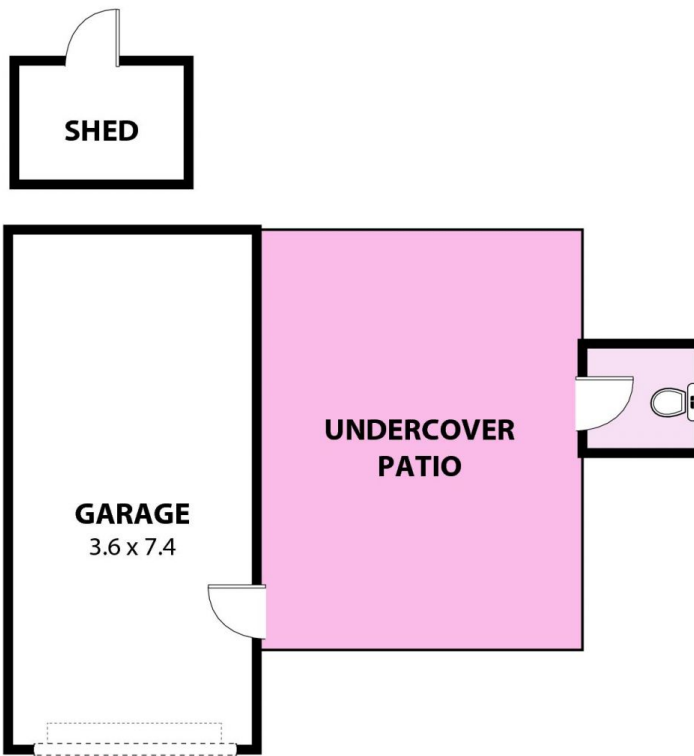
Type : House
Land Size : 556 sqm
View : <https://www.mcneice.com.au/8488313>



Mia Atkinson
02 4284 8536



Erin McPhillips
02 4284 8536



52 Lighthorse Drive Woonona

Plans shown are for presentation purposes and are not part of any legal document. Dimensions are approximate. AR2

