



6/488 Princes Highway Woonona NSW

3 2 2

style | convenience | light

Positioned in a peaceful block of only six, this stylish townhouse boasts a versatile layout with fresh, spacious and light-filled interiors. Designed to offer a low-maintenance and relaxed lifestyle just moments to Woonona main street and beautiful local beaches.

what you will love?

- > inviting open plan design with seamless indoor/outdoor connection
- > stylish gas kitchen with quality appliances and island to entertain

**Type** : Townhouse

**View** : <https://www.mcneice.com.au/8488273>



**Mia Atkinson**  
02 4284 8536

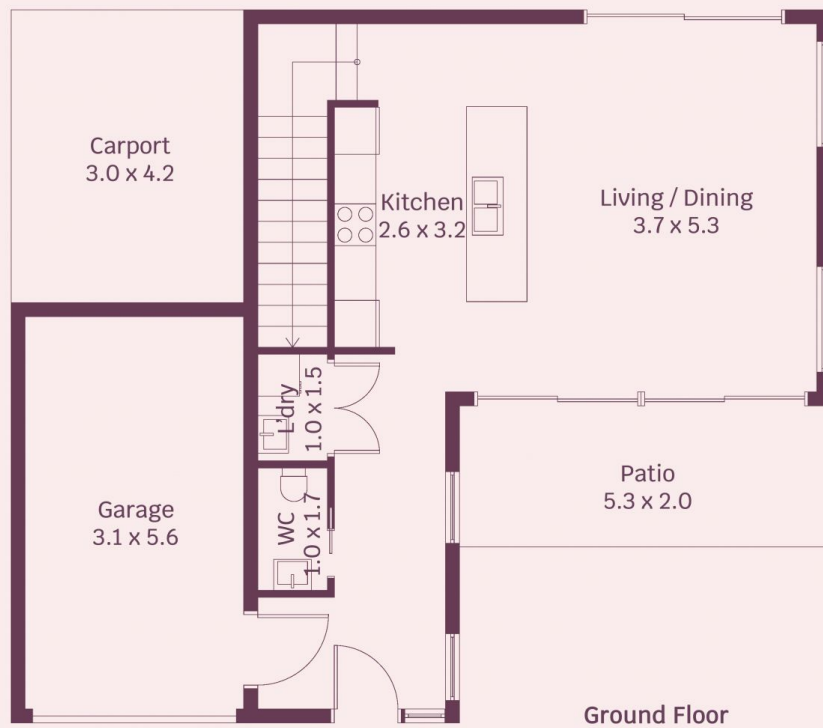
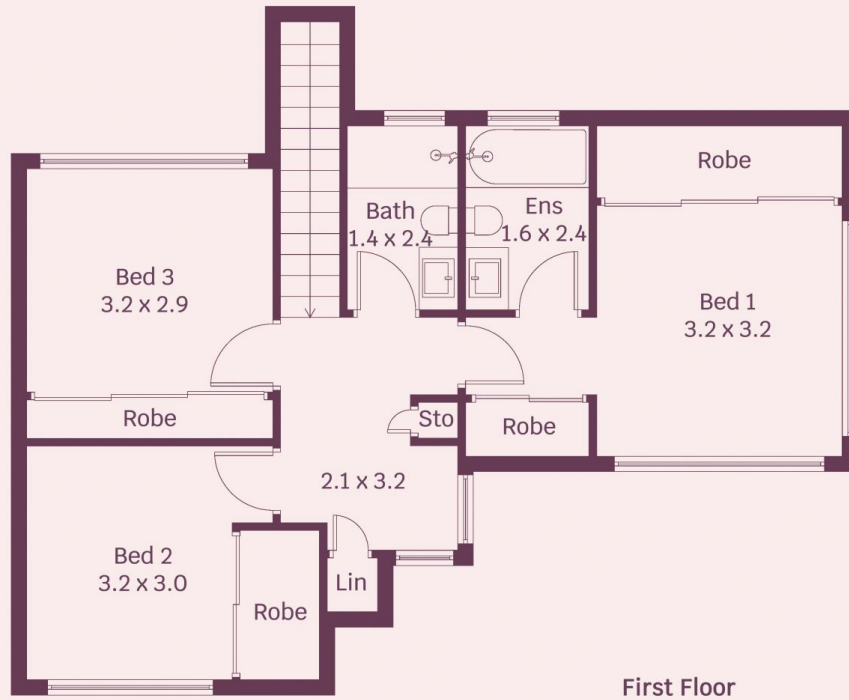


**Erin McPhillips**  
02 4284 8536

[For full version visit the website](https://www.mcneice.com.au)

6/488 Princes Highway, Woonona

molenaar × mcneice



HOUSE INTERNAL AREA 149m<sup>2</sup>  
HOUSE OVERALL AREA 173m<sup>2</sup>

Plans shown are for presentation purposes and are not part of any legal document.

Dimensions are approximate