



3 Loch Lomond Avenue Farmborough Heights NSW

3 1 1

modern | lifestyle | corner block

Embraced by green surroundings and guided by a fabulous sense of flow indoors to out, this light-filled residence provides modern comfort without compromise in a sought-after lifestyle setting close to tennis courts, local parks, schools and CBD transport.

what you will love...

- > brick veneer beauty extending over one well-designed level
- > large lounge and dining zone, polished floorboards throughout

[For full version visit the website](https://www.mcneice.com.au/8488217)

Type : House
Land Size : 639 sqm
View : <https://www.mcneice.com.au/8488217>

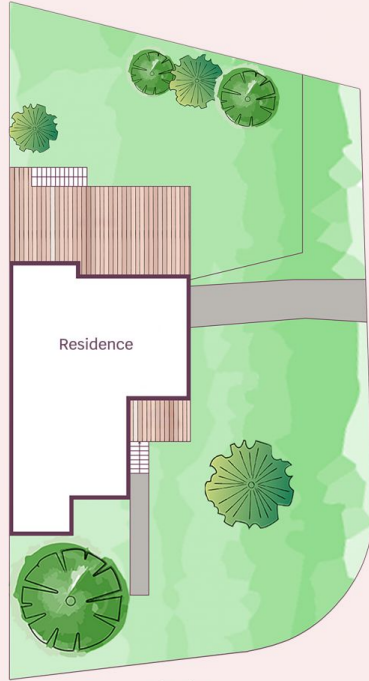


Hilary Moy
02 4284 8536

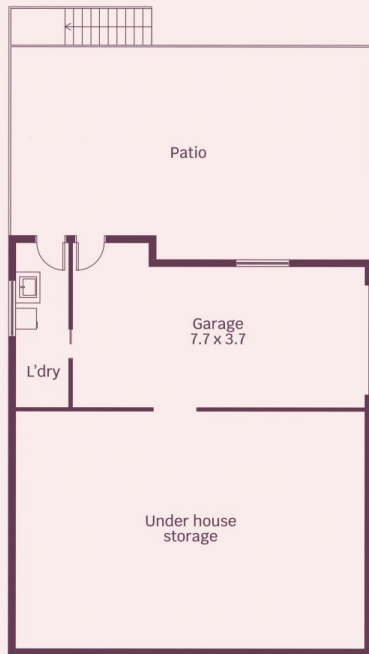


Erin McPhillips
02 4284 8536

3 Loch Lomond Avenue,
Farmborough Heights



Site plan
(not to scale)



Lower floor



Ground floor



HOUSE INTERNAL AREA 135m²
HOUSE OVERALL AREA 758m²

Plans shown are for presentation purposes and
are not part of any legal document.

Dimensions are approximate