



## 7 Wilsons Creek Road Helensburgh NSW

3 1 1

character | nature | opportunity

Brimming with yesteryear charm with a stylish twist, this character-filled home has been transformed into a family haven. This home is ready for enjoyment and is conveniently located close to Helensburgh train station. Explore the beautiful natural surroundings and wide open front and backyard.

- > spacious veranda overlooks the quaint leafy street
- > stylish kitchen with ample bench space and storage
- > gorgeous polished timber floorboards and high ceilings throughout
- > three bedrooms with gorgeous nature-filled outlooks

**Type** : House  
**Land Size** : 771 sqm  
**View** : <https://www.mcneice.com.au/8488161>



**Hilary Moy**  
02 4284 8536

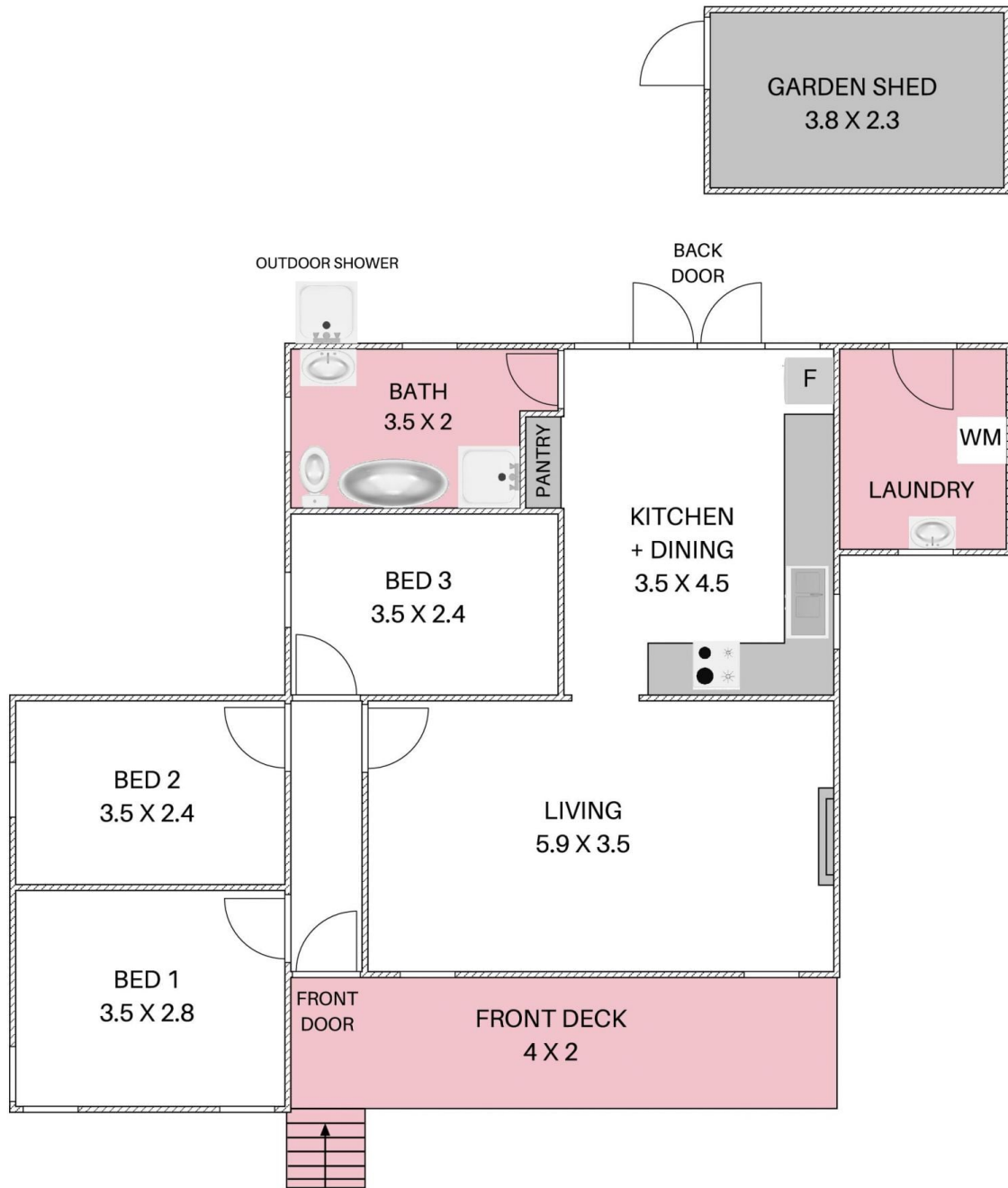


**Erin McPhillips**  
02 4284 8536

[For full version visit the website](https://www.mcneice.com.au)

7 WILSONS CREEK ROAD, HELENSBURGH

+ molenaar  
mcneice



HOUSE TOTAL AREA 81m<sup>2</sup>

Plans shown are for presentation purposes and are not part of any legal document. Dimensions are approximate.

