



52 Lighthouse Drive Woonona NSW

3 1 1

what you will love?

sun drenched | fresh | beach | lifestyle

So close to the beach that you can feel the salt in the air and the waves crashing, this renovated beach cottage is offered for lease for the first time. A family home in a prime location with a desirable north to rear sunny aspect.

- + character filled three bedroom home
- + level 556 sqm parcel of land in a sought-after street
- + 3 minutes walking distance to the beach and bike track
- + tastefully updated with polished floors and fresh decor
- + newly renovated modern kitchen, NBN ready
- + completely level and flat block with large fenced yard

Type : House

Land Size : 556 sqm

View : <https://www.mcneice.com.au/8488114>

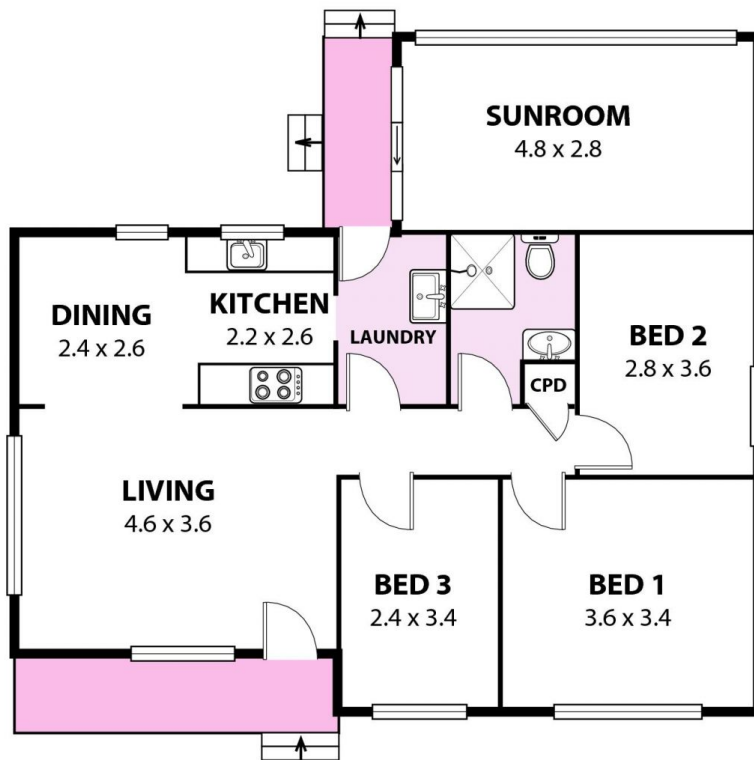
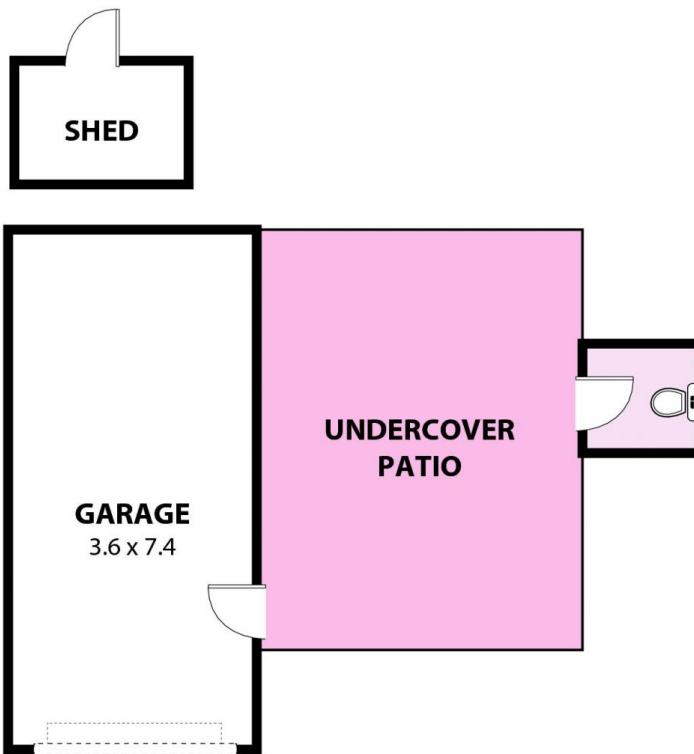


Hilary Moy
02 4284 8536



Erin McPhillips
02 4284 8536

[For full version visit the website](https://www.mcneice.com.au)



52 Lighthorse Drive Woonona

Plans shown are for presentation purposes and are not part of any legal document. Dimensions are approximate. AR2

