



10 East Street Russell Vale NSW

2 1 1

what you will love?
space | character | opportunity

This home is the perfect choice for families seeking space, comfort and a family friendly community.

- + refreshed original cottage and additional studio on a 738 sqm block
- + high ceilings, ornate cornices, ducted air conditioning throughout
- + modern kitchen with top quality Smeg appliances and downlights
- + fantastic covered entertainment deck looking towards escarpment

[For full version visit the website](#)

Type : House
View : <https://www.mcneice.com.au/8488035>



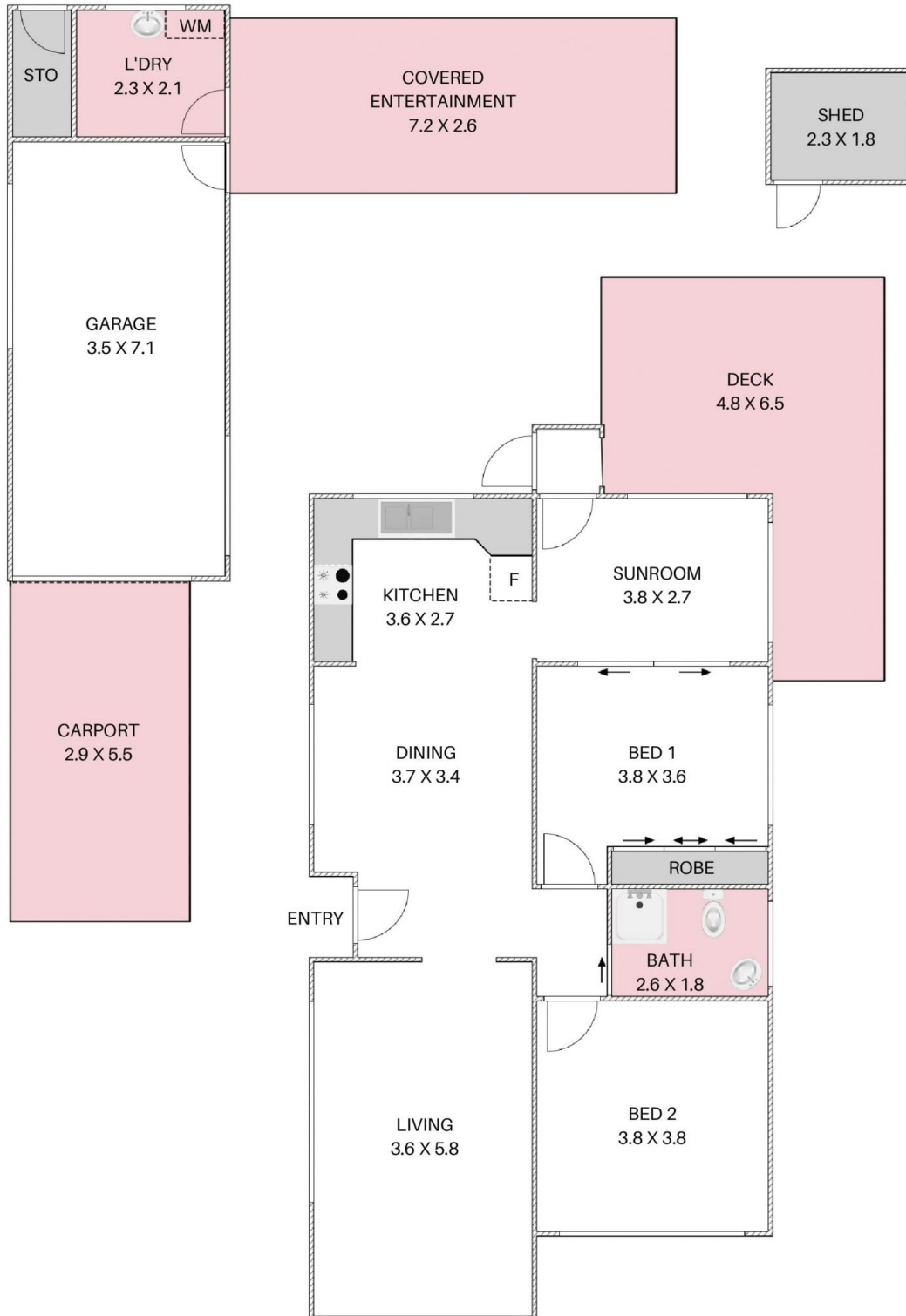
Erin McPhillips
02 4284 8536



Hilary Moy
02 4284 8536

10 EAST ST, RUSSELL VALE

+ molenaar
mcneice



HOUSE INTERNAL AREA: 131m²

HOUSE TOTAL AREA: 190m²

Plans shown are for presentation purposes and are not part of any legal document. Dimensions are approximate.

