

26 Koorabel Avenue West Wollongong NSW

4 1 2

character | convenience | entertainer

Classic weatherboard charm meets modern family living in this beautifully presented home, perfectly positioned in the quiet and family-friendly West Wollongong. With Roy Johanson park and playground only 40 metres away, this location offers the perfect blend of peaceful residential living and family convenience.

what you will love...

- > classic weatherboard exterior providing instant street appeal
- > highly sought after location enjoying views of the

[For full version visit the website](https://www.mcneice.com.au)

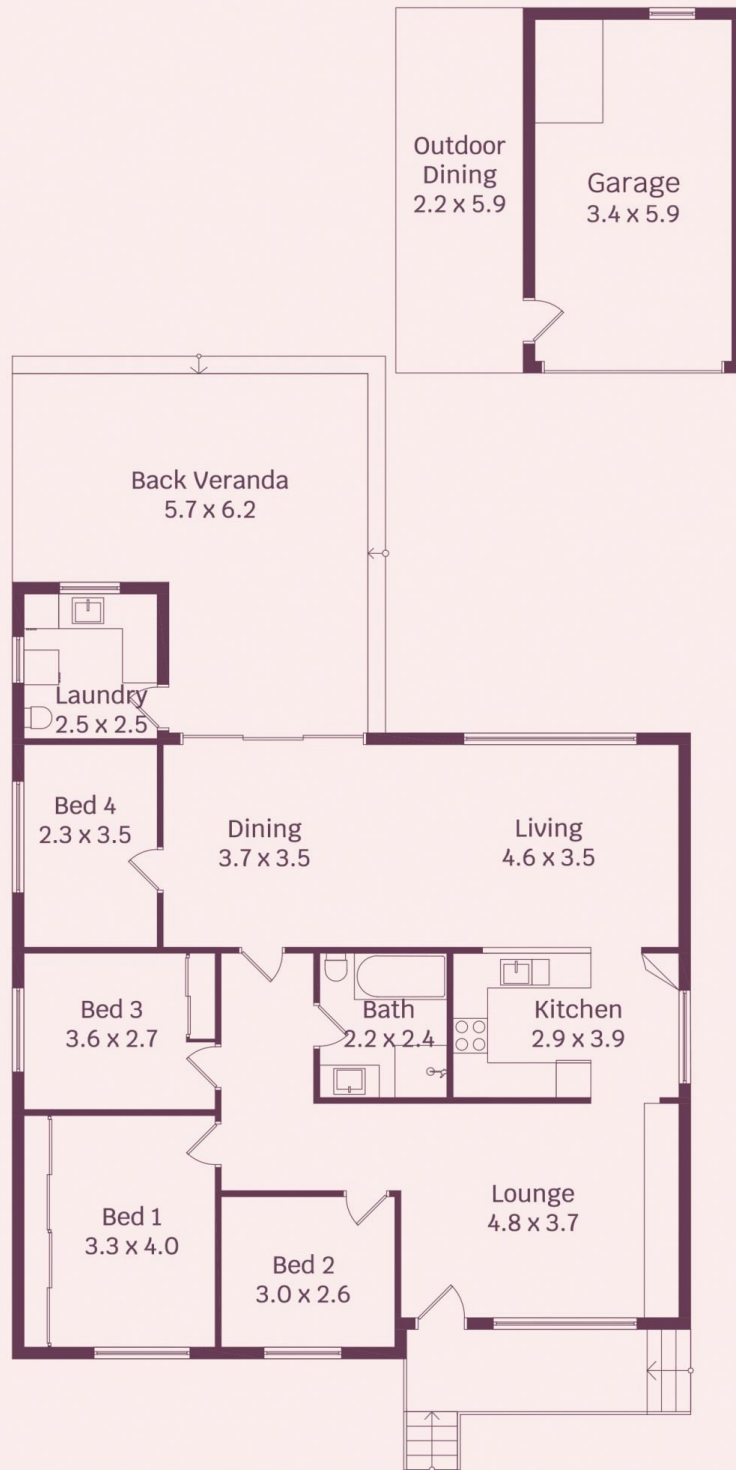
**Type** : House  
**Price** : \$ 1,177,000  
**Land Size** : 556 sqm  
**View** : <https://www.mcneice.com.au/8484999>



**Adam Blackmore**  
02 4284 8536



**Matthew Stipcevic**  
02 4284 8536



HOUSE INTERNAL AREA 131m<sup>2</sup>

HOUSE OVERALL AREA 212m<sup>2</sup>

Plans shown are for presentation purposes and are not part of any legal document.

Dimensions are approximate