



192 Cabbage Tree Lane Mount Pleasant NSW

5 🛏 3 🚿 2 🚗

location | space | light

Private, tightly held and one of a kind, this generational home is being offered to the market for the first time in 45 years. Set over a sprawling 4,975sqm parcel drenched in natural light and surrounded by award winning gardens. Vast open areas both inside and out with Tuscan inspired features and fittings, ideal for those looking for a home with endless space and possibilities. A rare opportunity to find space and privacy all within a short drive to sought after schools, popular shops, cafes and Wollongong CBD. Easy access to the M1 freeway within 90 minutes to Sydney.

what you will love...

[For full version visit the website](https://www.mcneice.com.au/8484991)

Type : House
Land Size : 4975 sqm
View : <https://www.mcneice.com.au/8484991>



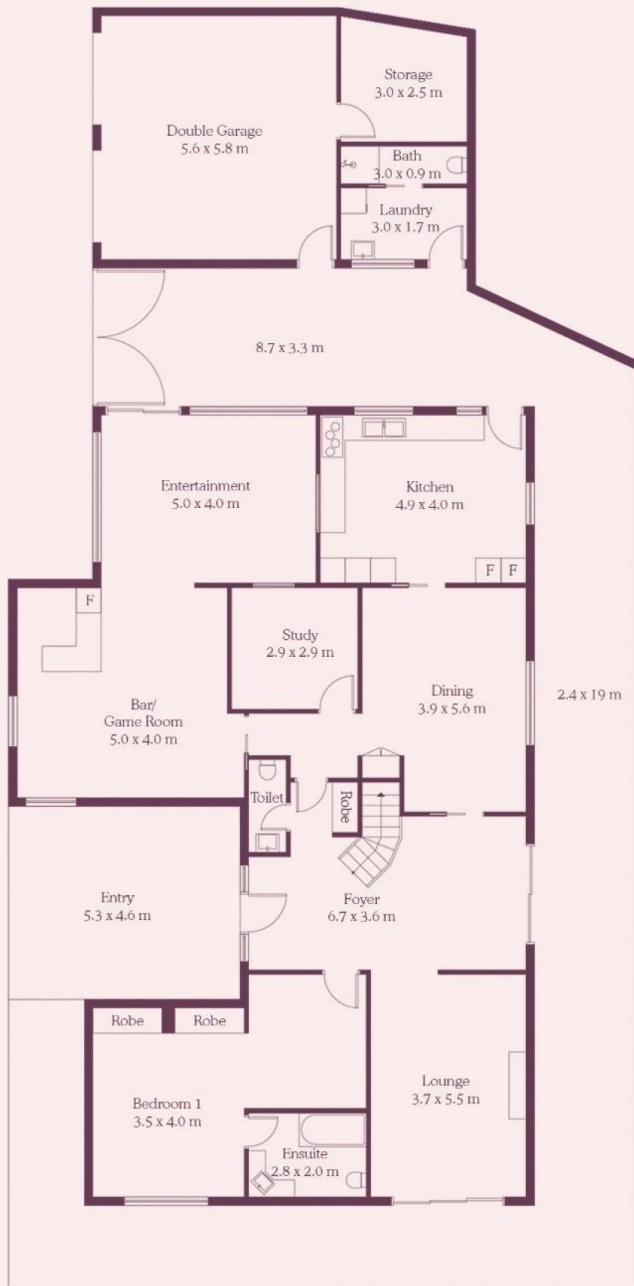
Daniel Mulholland
02 4284 8536



Emre Hasdiraz
02 4284 8536

192 Cabbage Tree Lane,
Mount Pleasant

mcneice ✕



Ground Floor



First Floor



HOUSE INTERNAL AREA 302m²

HOUSE OVERALL AREA 452m²

Plans shown are for presentation purposes and
are not part of any legal document.

Dimensions are approximate