



5/16 The Avenue Corrimal NSW

3 2 2

space | entertaining | light-filled

Quietly nestled away in a tree-lined street in the heart of Corrimal, this executive style townhouse offers an impeccable combination of privacy, class and comfort. With a boutique complex of only seven residences, this home is an ideal retreat, providing the perfect blend of modern living and tranquillity.

what you will love....

- > open-plan kitchen, living, and dining area, designed to maximise natural light
- > bright and airy finishes across a well thought out floorplan

[For full version visit the website](#)

Type : Townhouse

Price : \$ 1,150,000

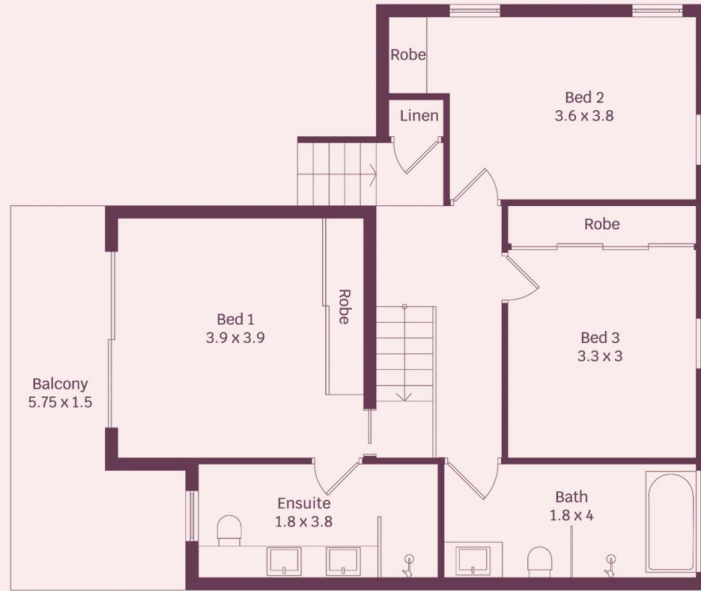
View : <https://www.mcneice.com.au/8484977>



David Hyslop
02 4284 8536



Tyler Hoggard
02 4284 8536



First Floor



Ground Floor



HOUSE INTERNAL AREA 165m²
HOUSE OVERALL AREA 200m²

Plans shown are for presentation purposes and are not part of any legal document.
Dimensions are approximate