

28a Railway Avenue Austinmer NSW

6 3 2

tranquil | family | location

Possessing the best of both worlds close to everything but still far enough away to enjoy the privacy and tranquility that only Austinmer offers. Set against a breathtaking escarpment backdrop this beautifully presented six-bedroom family home offers a serene lifestyle, with a focus on effortless living and versatile spaces, this thoughtfully designed residence features a heated pool, (12K) solar panels and is set just moments from the lush coastline of Austinmer

what you will love?

[For full version visit the website](https://www.mcneice.com.au/8484972)

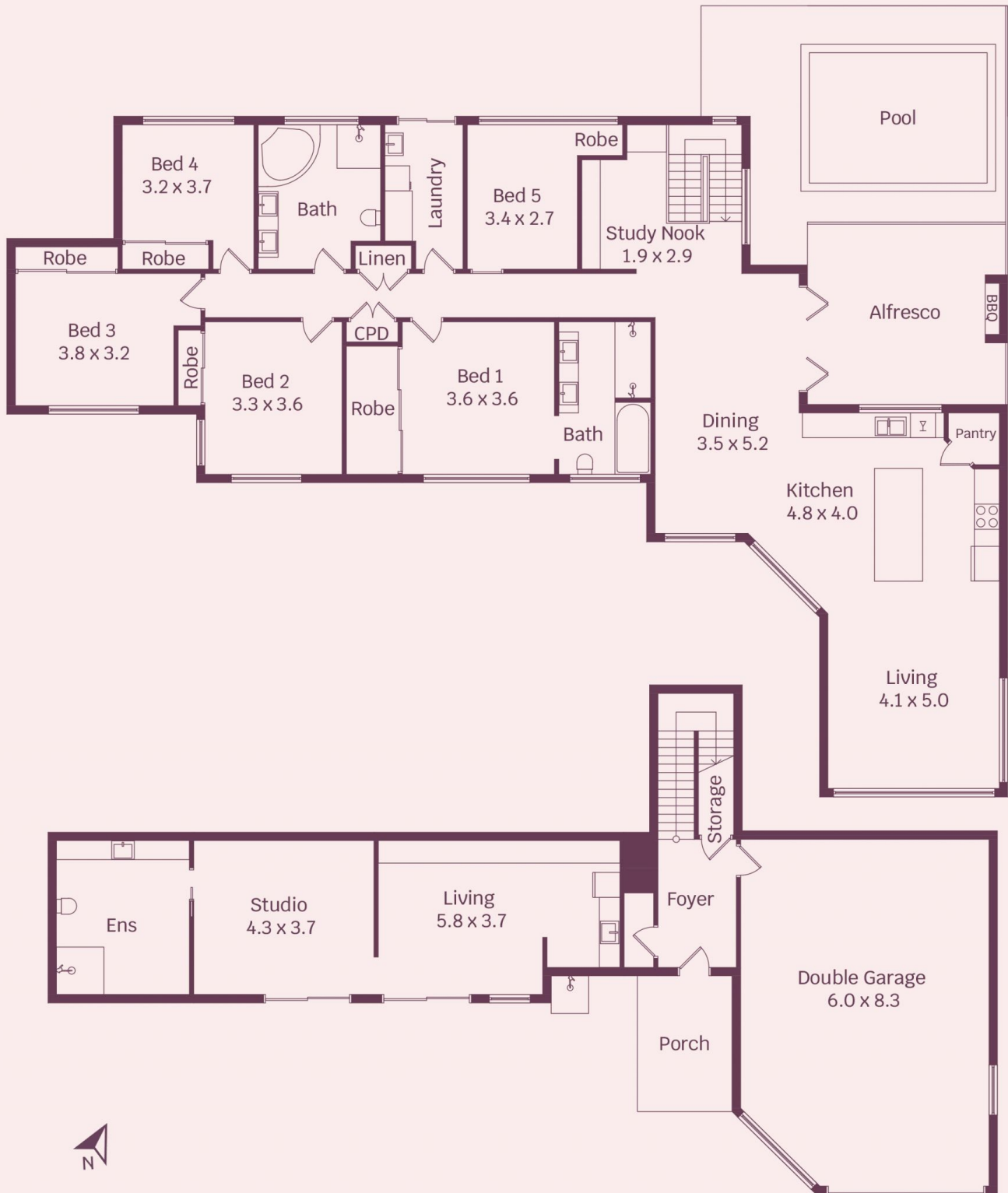
Type : House
Land Size : 566 sqm
View : <https://www.mcneice.com.au/8484972>



David Hyslop
02 4284 8536



Matthew Stipcevic
02 4284 8536



HOUSE INTERNAL AREA 325m²
HOUSE OVERALL AREA 389m²

Plans shown are for presentation purposes and are not part of any legal document.
Dimensions are approximate