

31a The Waves Thirroul NSW

4 2 2

elegance | craftsmanship | views

Perched in the prestigious enclave of 'The Waves,' this architectural masterpiece offers a rare dual vista experience with breathtaking ocean views from the front and serene escarpment panoramas from the rear. The brand new north-facing duplex has been meticulously crafted with refined elegance and sophisticated finishes that epitomize contemporary coastal luxury. Floor-to-ceiling windows frame the spectacular surroundings while flooding the interiors with natural light, creating an effortless connection between indoor and outdoor living. Every element has been thoughtfully selected to ensure both visual harmony and practical luxury, from the premium

Type : House

View : <https://www.mcneice.com.au/8484964>



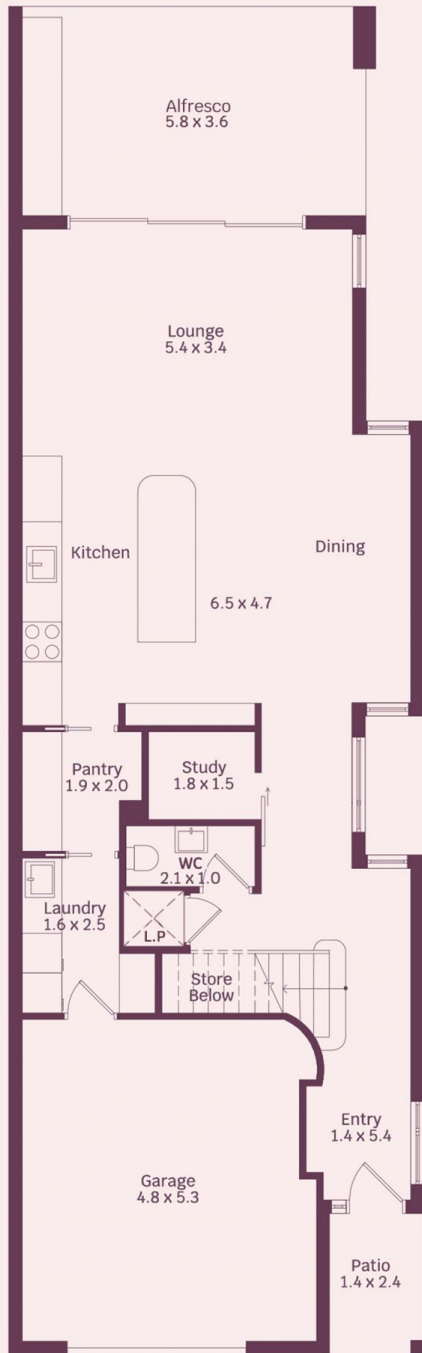
Adam Blackmore
02 4284 8536



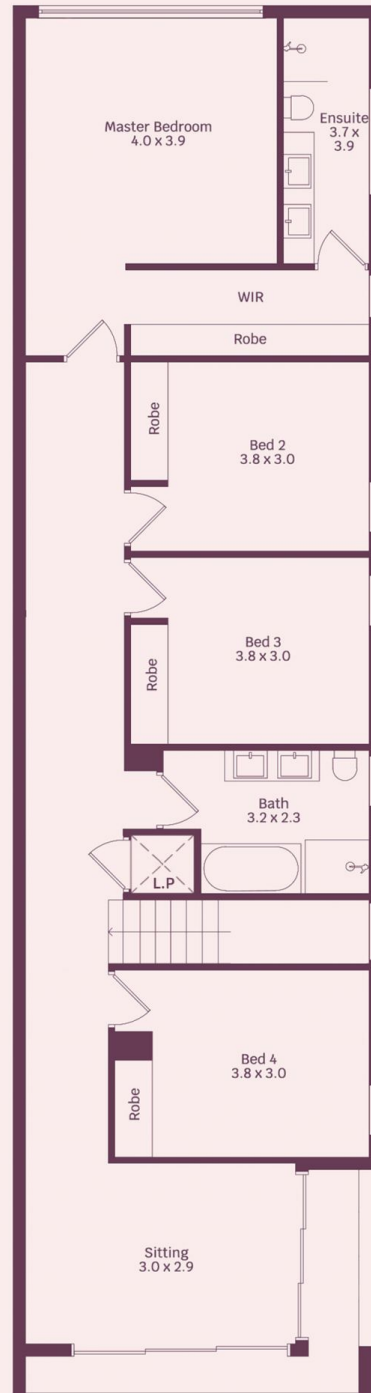
Troy McNeice
02 4284 8536

[For full version visit the website](#)

31A The Waves, Thirroul



Ground Floor



First Floor



HOUSE INTERNAL AREA 223m²
HOUSE OVERALL AREA 284m²

Plans shown are for presentation purposes and are not part of any legal document.
Dimensions are approximate