

6/18 The Avenue Corrimal NSW

3 2 2

location | privacy | convenience

Quietly nestled away in a tree-lined street in the heart of Corrimal, this executive style townhouse offers an impeccable combination of privacy, class and comfort. With a boutique complex of only seven residences, this home is an ideal retreat, providing the perfect blend of modern living and tranquility.

what you will love...

- > open-plan kitchen, living, and dining area, designed to maximise natural light
- > modern kitchen with a large breakfast bar, perfect for

[For full version visit the website](https://www.mcneice.com.au/8484952)

Type : Townhouse

Price : \$ 1,120,000

View : <https://www.mcneice.com.au/8484952>



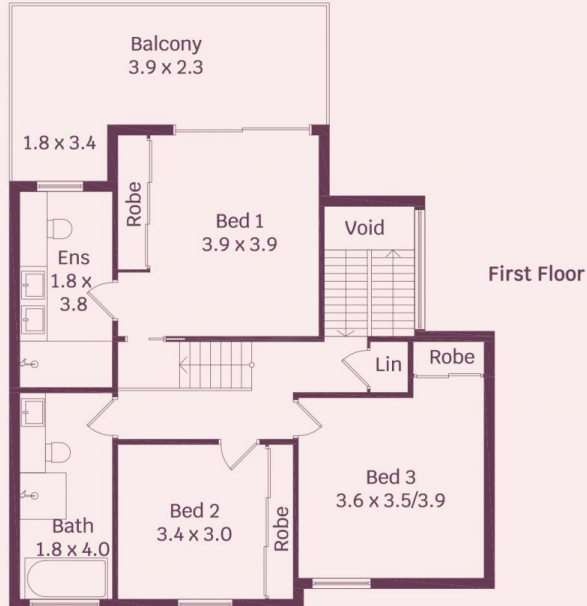
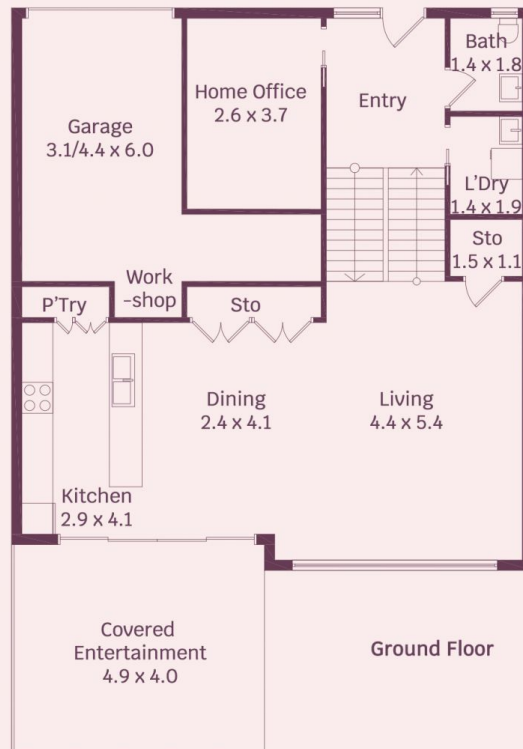
Guy Hampton
02 4284 8536



Adam Blackmore
02 4284 8536

6/18 The Avenue, Corrimal

molenaar × mcneice



HOUSE INTERNAL AREA 184m²

HOUSE OVERALL AREA 221m²

Plans shown are for presentation purposes and are not part of any legal document.

Dimensions are approximate