

5 Gifford Street Coledale NSW

4 2 2

spacious | peaceful | entertain

Set on one of Coledale's most impressive blocks of land, presenting a rare opportunity to renovate, develop, or simply enjoy. Positioned just moments from the beach, this versatile home offers generous indoor and outdoor spaces across three levels, including outdoor pool and expansive backyard. The location combines relaxed coastal living with proximity to convenience, making it ideal for families, investors, or those seeking a bespoke lifestyle upgrade.

what you will love...

> positioned on one of Coledale's largest blocks, offering

[For full version visit the website](https://www.mcneice.com.au)

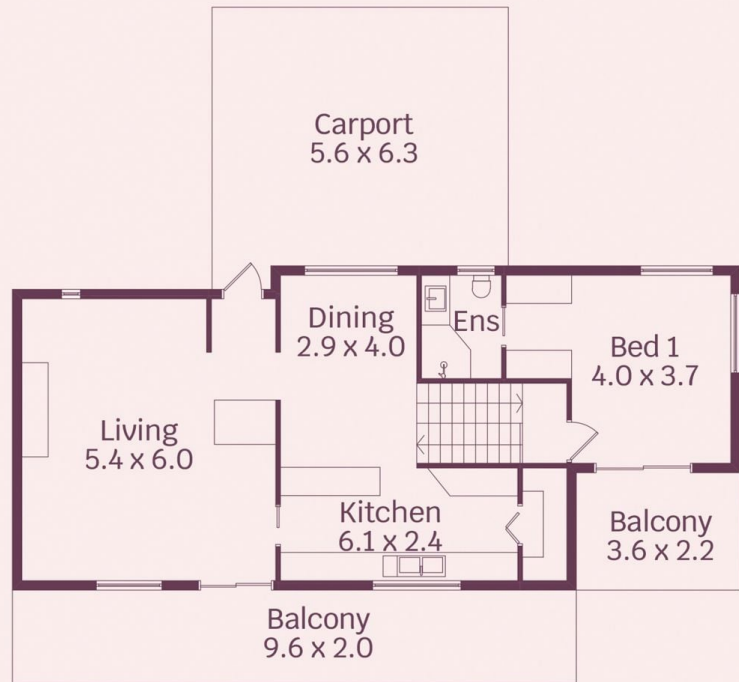
Type : House
Price : \$ 2,920,000
Land Size : 1431 sqm
View : <https://www.mcneice.com.au/8484940>



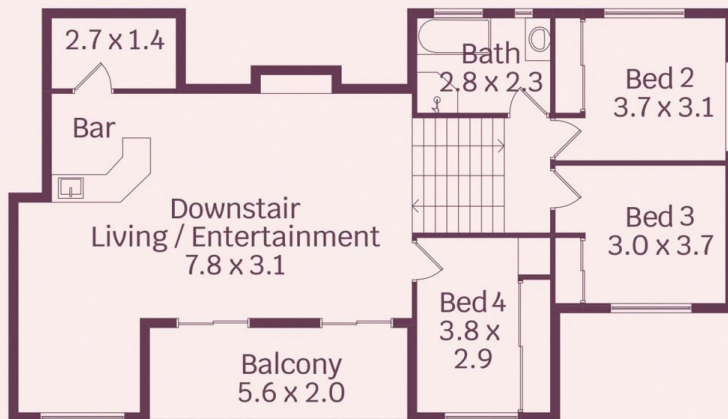
David Hyslop
02 4284 8536



Guy Hampton
02 4284 8536



First Floor



Ground Floor



Lower Ground Floor



HOUSE INTERNAL AREA 197m²
HOUSE OVERALL AREA 439m²

Plans shown are for presentation purposes and
are not part of any legal document.
Dimensions are approximate