



31 Flame Tree Circuit Woonona NSW

2 1 1

modern | tranquil | downsize

Located in the popular Edgewood Estate, this single level Torrens title villa perfectly suits someone wishing to downsize without the on-going cost of strata or spacious entry level opportunity for a first home buyer. Functional in design and provides an easy care lifestyle.

- > spacious modern interiors are light and airy with neutral décor and North facing entry
- > open flowing layout extends to private paved courtyard with a pleasant aspect over reserve
- > two well sized bedrooms both fitted with built-in wardrobes, freshly laid carpet in each

[For full version visit the website](https://www.mcneice.com.au/8484909)

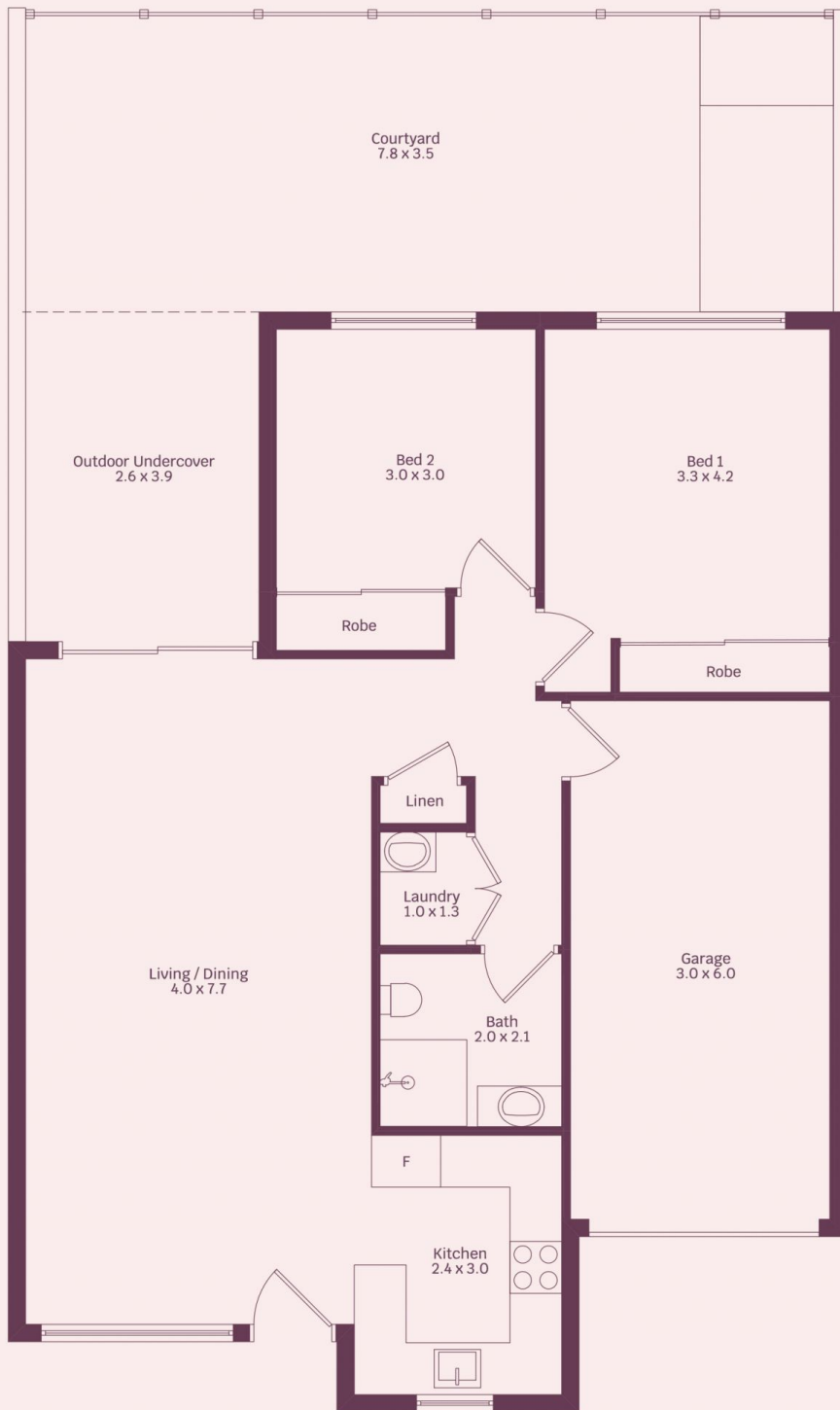
Type : House
Land Size : 201 sqm
View : <https://www.mcneice.com.au/8484909>



Matthew Stipcevic
02 4284 8536



Adam Blackmore
02 4284 8536



HOUSE INTERNAL AREA 94m²
HOUSE OVERALL AREA 137m²

Plans shown are for presentation purposes and are not part of any legal document.

Dimensions are approximate