



1/52 Campbell Street Woonona NSW

3 3 3

beach | stylish | lifestyle

This impeccably stylish beach home effortlessly blends space and comfort, offering a perfect balance for easy living. Just 700m from the sands of Bulli Beach and the cycleway, and 850m to Woonona Village and shops, its open-plan, low-maintenance layout makes it ideal for families or downsizers seeking convenience and style.

what you will love ...

- > three bedroom standalone house with expansive open plan living, moments to the beach and shops
- > newly laid hybrid timber flooring in downstairs bedroom,

[For full version visit the website](https://www.mcneice.com.au)

Type : House
Price : \$ 1,436,000
Land Size : 299 sqm
View : <https://www.mcneice.com.au/8484908>



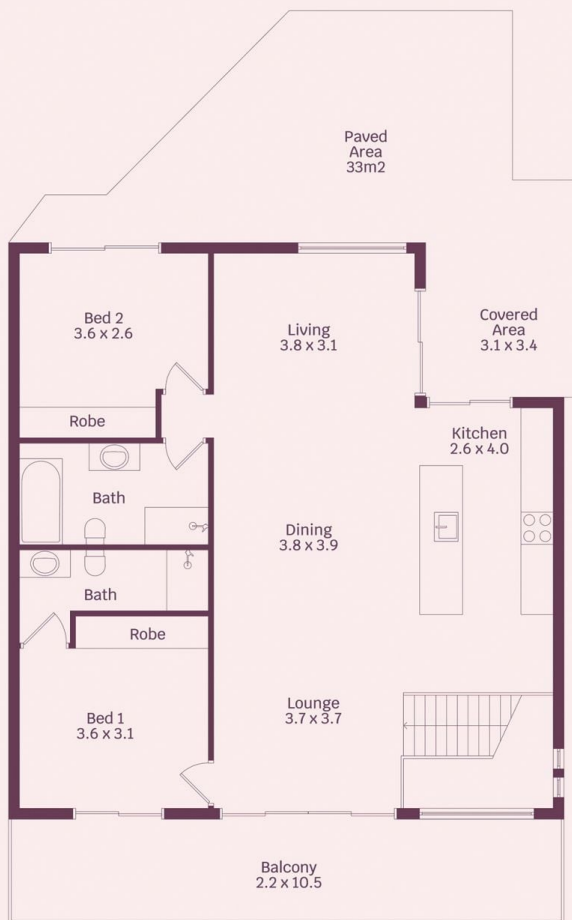
Matthew Stipcevic
02 4284 8536



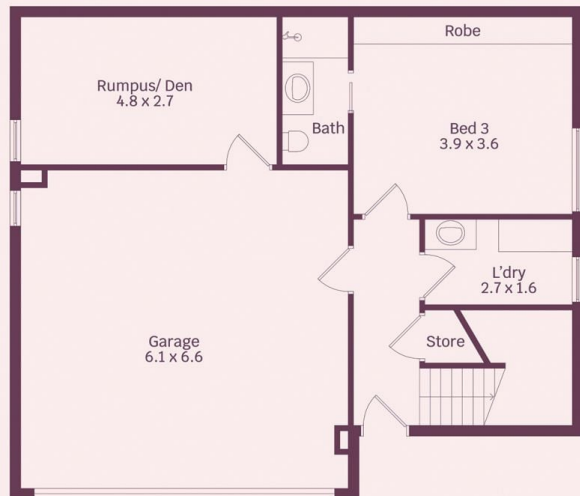
Adam Blackmore
02 4284 8536

1/52 Campbell Street,
Woonona

molenaar × mcneice



Ground Level



Lower Level



HOUSE INTERNAL AREA 180m²
HOUSE OVERALL AREA 238m²

Plans shown are for presentation purposes and
are not part of any legal document.

Dimensions are approximate