



156 Edgeworth Avenue Kanahooka NSW

4 2 2

location | size | yard

This two storey brick home is the perfect entry into a thriving family-friendly suburb. Awash with all day sunlight, this renovated home boasts a versatile layout ideal for those looking for flexible living. Sitting proudly on an expansive 785sqm with side access ideal for boat or caravan, backing onto tranquil Brooks Creek within a short flat walk to pristine Lake Illawarra, bike tracks, cafes and play grounds. Offering a flexible floorplan with study, separate internal living areas and private outdoor entertaining options.

what you will love...

[For full version visit the website](https://www.mcneice.com.au/8484907)

Type : House
Land Size : 785 sqm
View : <https://www.mcneice.com.au/8484907>

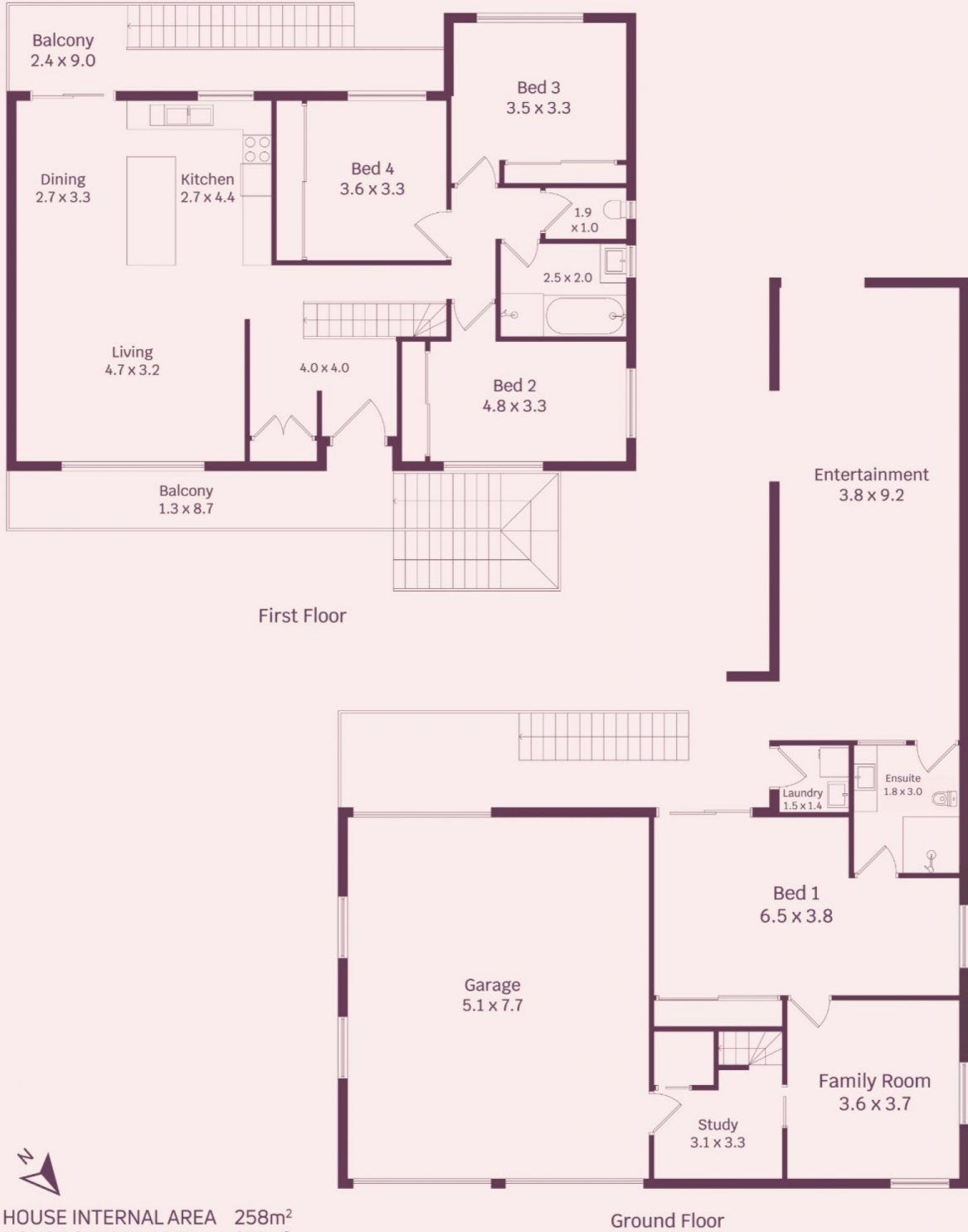


Daniel Mulholland
02 4284 8536



Emre Hasdiraz
02 4284 8536

156 Edgeworth Ave, Kanahooka



HOUSE INTERNAL AREA 258m²
 HOUSE OVERAL AREA 279m²

Plans shown are for presentation purposes and are not part of any legal document.
 Dimensions are approximate