



58 Campbell Street Woonona NSW

4 🛏 3 🚗 2 🚗

family | light | finishes

Set over two impressive levels in the peaceful Woonona, this north-facing family home has been designed and built with generous spaces to maximise its lush surroundings. Relax and entertain effortlessly with open-plan living spaces both indoors and outdoors while being just moments to all of Woonona's shopping district and popular patrolled beaches.

what you will love...

- > four bedrooms of accommodation with built-in wardrobes
- > master with ensuite, walk-in wardrobe and Juliette

[For full version visit the website](https://www.mcneice.com.au/8484901)

Type : House

Price : \$ 1,500,000

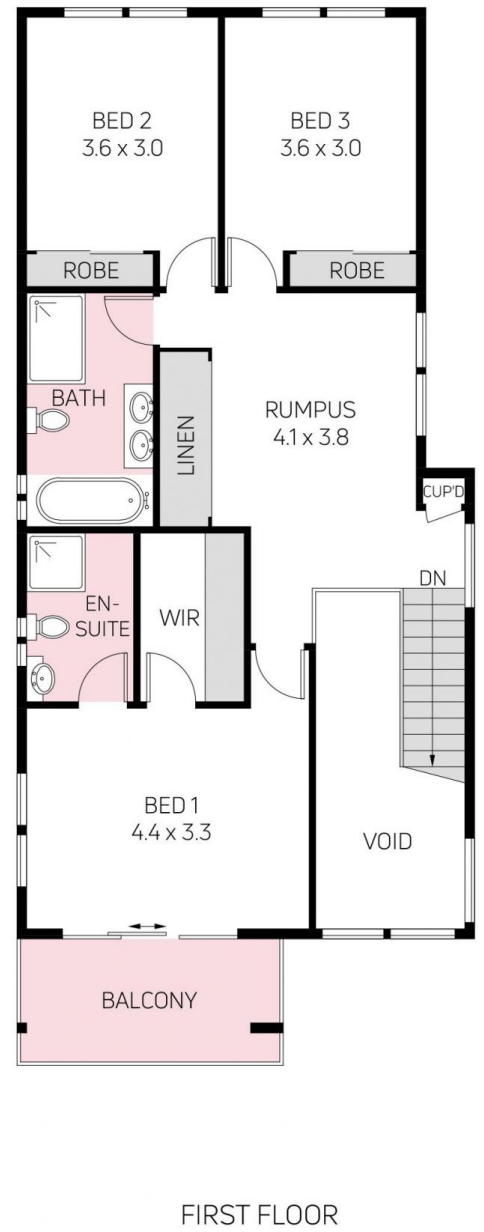
View : <https://www.mcneice.com.au/8484901>



Daniel Mulholland
02 4284 8536



Adam Blackmore
02 4284 8536



HOUSE TOTAL AREA 209m²

Plans shown are for presentation purposes and are not part of any legal document. Dimensions are approximate.