



## 34 Domville Road Otford NSW

4 🛏 1 🚿 2 🚗

serenity | bushland | lifestyle

Set amidst the bushland and peaceful surrounds, this spacious family home presents a much-desired lifestyle in a highly sought locale. With its northern aspect to the rear you can soak up the sunshine whilst enjoying the scenic views from your private deck. Opportunities like this in Otford never last very long.

what you will love?

- > generous size main living room with original timber floorboards
- > contemporary kitchen with breakfast bar overlooking

[For full version visit the website](https://www.mcneice.com.au)

**Type** : House  
**Price** : \$ 1,170,000  
**Building Size** : 168 sqm  
**Land Size** : 1031 sqm  
**View** : <https://www.mcneice.com.au/8484871>



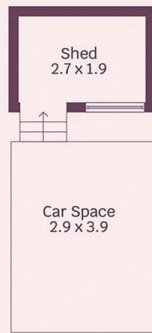
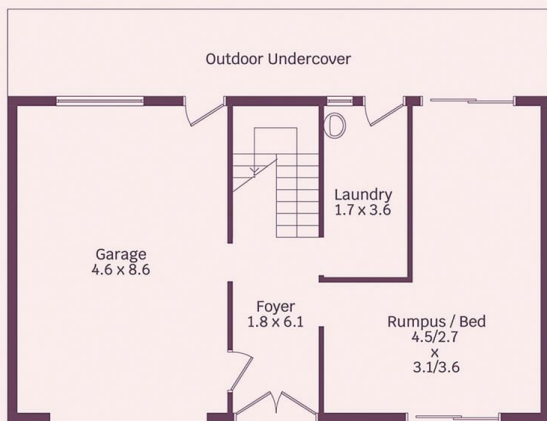
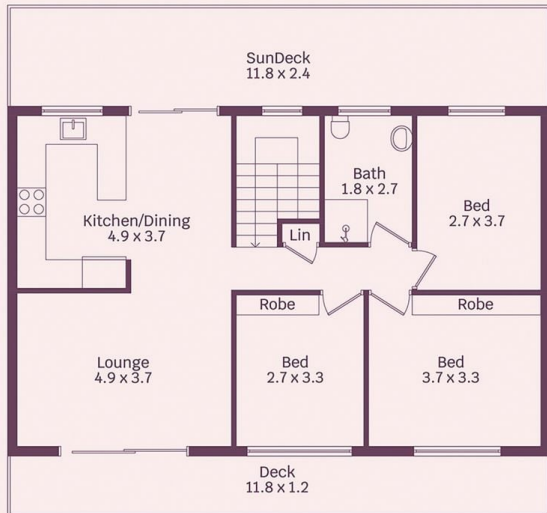
**Adam Blackmore**  
02 4284 8536



**Matthew Stipcevic**  
02 4284 8536

34 Domville Road, Otford

molenaar × mcneice



Not  
in position



Domville Road  
Site plan  
(not to scale)



HOUSE INTERNAL AREA 168m<sup>2</sup>  
HOUSE OVERALL AREA 693m<sup>2</sup>

Plans shown are for presentation purposes and  
are not part of any legal document.  
Dimensions are approximate