



2/31 Park Road Bulli NSW

3 1 3

[location](#) | [floorplan](#) | [lifestyle](#)

Tucked away in a quiet and well-maintained complex, this modern duplex- townhouse has been tastefully updated and boasts stylish interiors. Semi-detached from the neighbours with side access, offering a generous outdoor deck with green surrounds and tranquil escarpment views, it is a truly seaside lifestyle retreat over three generous levels. You will find yourself only a short stroll from the patrolled beaches, shops, cafes and public transport.

what you will love...

> three bedrooms of accommodation with built in

Type : Townhouse

Price : \$ 1,105,222

View : <https://www.mcneice.com.au/8484869>



Daniel Mulholland
02 4284 8536

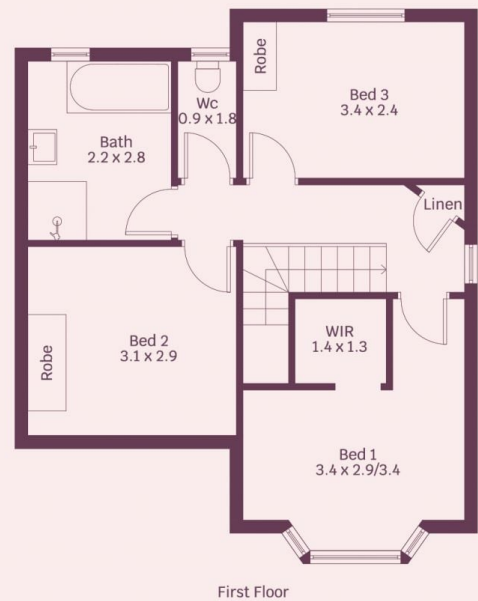
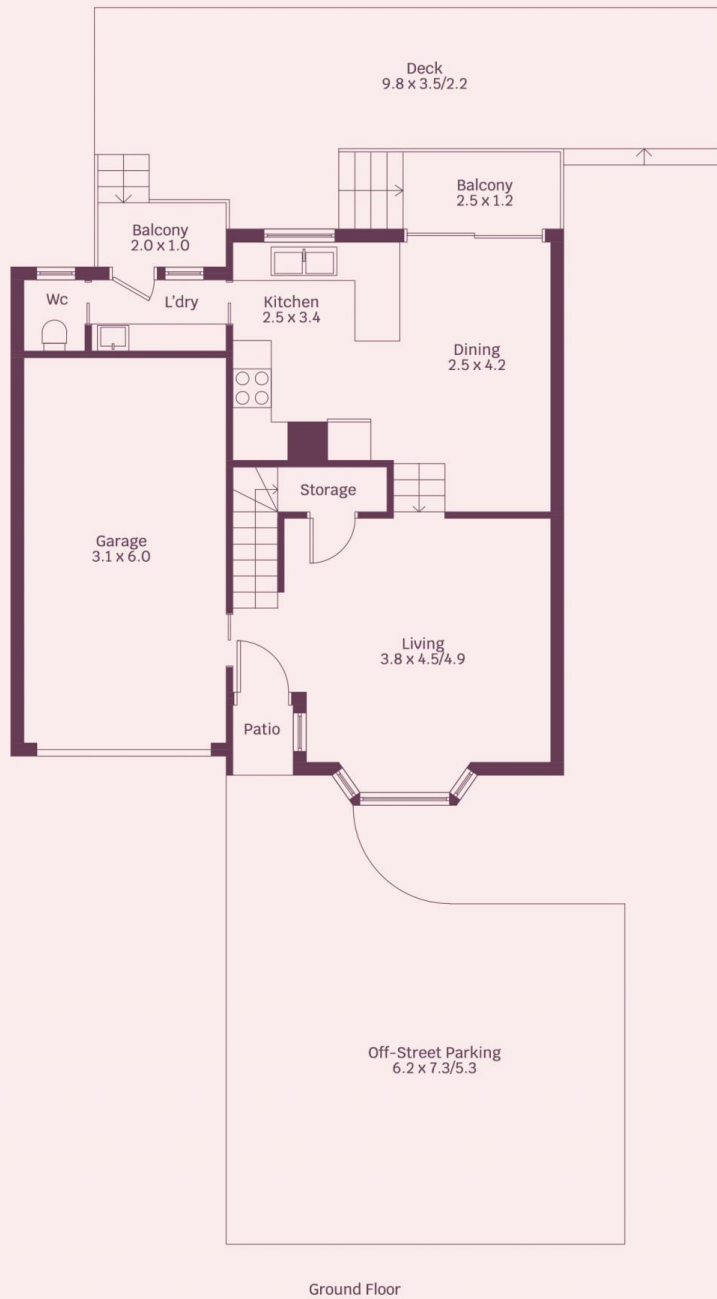


Adam Blackmore
02 4284 8536

[For full version visit the website](#)

2/31 Park Road, Bulli

molenaar × mcneice



HOUSE INTERNAL AREA 122m²
HOUSE OVERALL AREA 192m²

Plans shown are for presentation purposes and
are not part of any legal document.

Dimensions are approximate