



33A Redman Avenue Thirroul NSW

4 3 2

location | designer | style

Discover a fresh approach to coastal living crafted by Rosebriar Developments in collaboration with the acclaimed Sydney-based Interior Designers - Studio LHD. Unparalleled and never to be repeated this architecturally designed home exhibits a perfect blend of sophistication and functionality, ensuring no compromise on luxury. Nestled on a highly coveted street, this elegant coastal retreat offers stunning ocean views, just a leisurely stroll away from the sands of Thirroul Beach, while taking luxury living and entertainment to new heights.

> eye-catching timber screen batted façade with a

[For full version visit the website](https://www.mcneice.com.au/8484860)

Type : Semi Detached

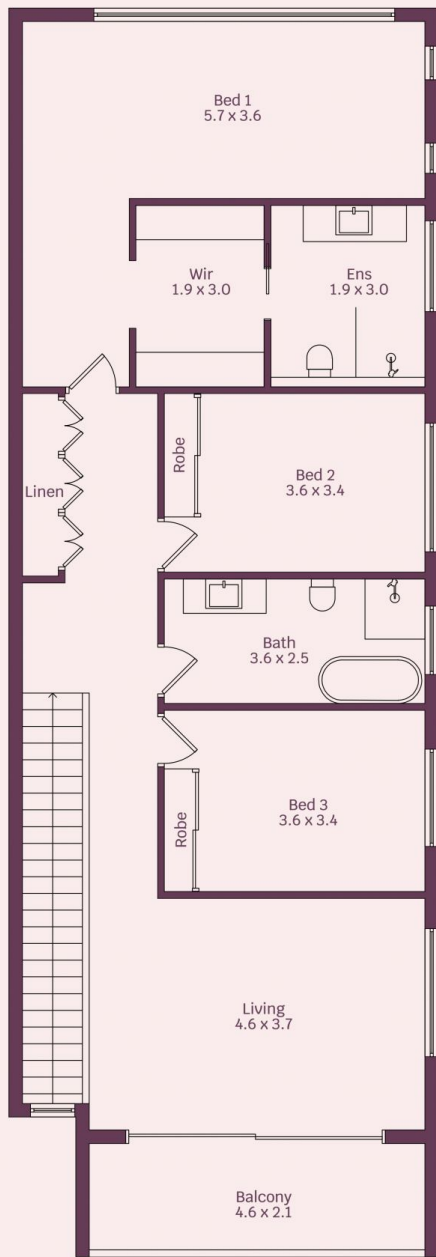
View : <https://www.mcneice.com.au/8484860>



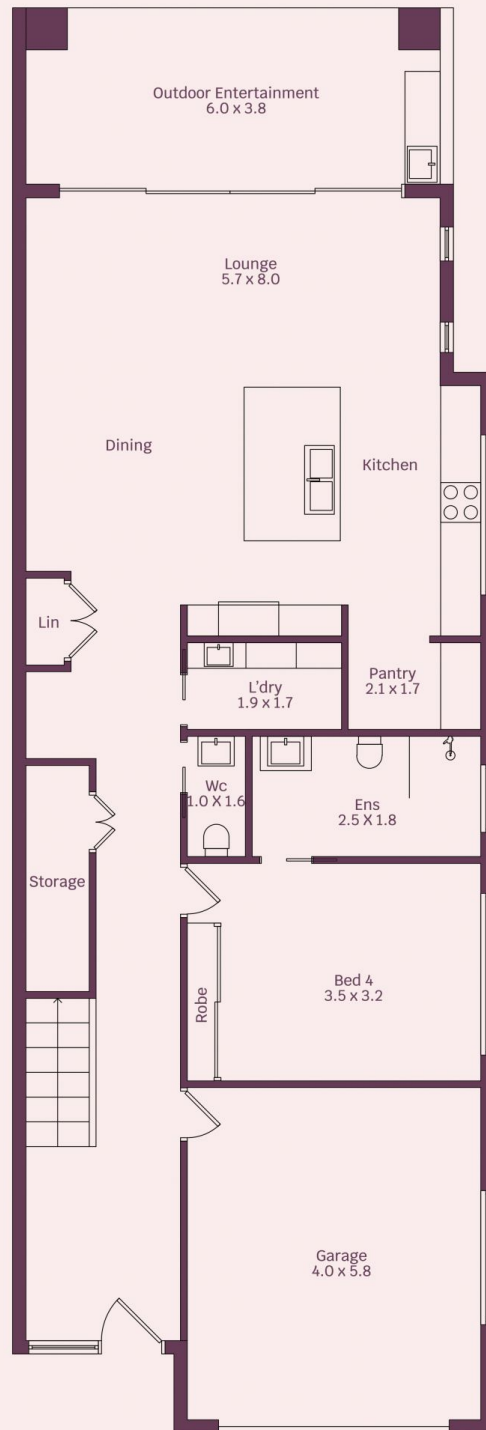
David Hyslop
02 4284 8536

33A Redman Avenue, Thirroul

molenaar × mcneice



First Floor



Ground Floor



HOUSE INTERNAL AREA 190m²

HOUSE OVERALL AREA 190m²

Plans shown are for presentation purposes and are not part of any legal document.

Dimensions are approximate