



638 Princes Highway Russell Vale NSW

3 1 3

land | potential | views

A freshly renovated character home brimming with potential. Set on a flat 1,005 sqm sun drenched parcel with endless potential to grow or develop (STCA). Positioned conveniently only a short walk to popular Flat White Cafe, The Vale Golf Course and short drive to Woonona or Corrimal shopping district.

what you will love...

- > three bedrooms of accommodation with built-in wardrobes
- > main bedroom with reverse cycle air-conditioning and

[For full version visit the website](https://www.mcneice.com.au)

**Type** : House  
**Price** : \$ 1,190,000  
**Land Size** : 1005 sqm  
**View** : <https://www.mcneice.com.au/8484853>



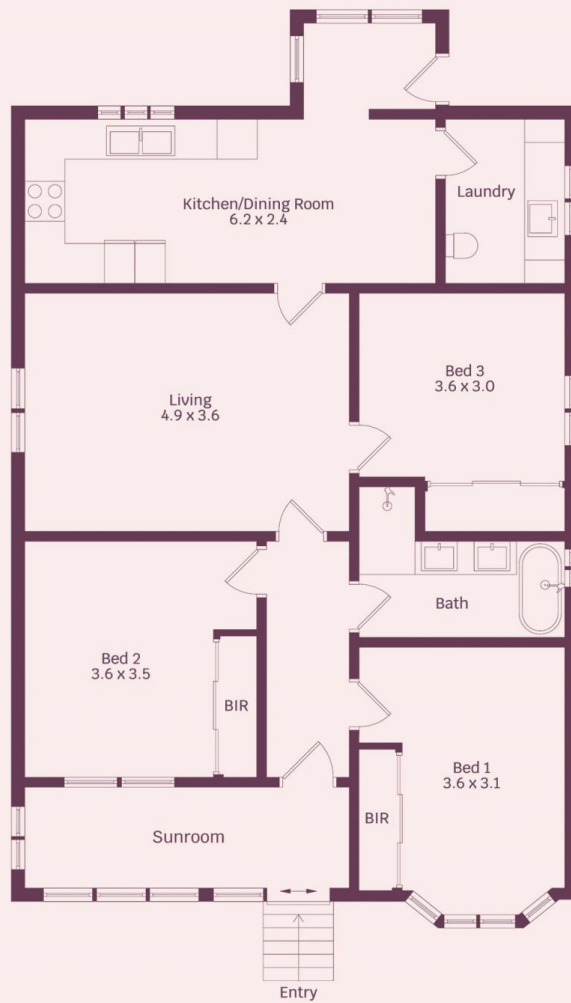
**Daniel Mulholland**  
02 4284 8536



**Emre Hasdiraz**  
02 4284 8536

638 Princes Highway, Russell Vale

molenaar × mcneice



HOUSE INTERNAL AREA 98.4m<sup>2</sup>  
HOUSE OVERALL AREA 104.6m<sup>2</sup>

Plans shown are for presentation purposes and are not part of any legal document.

Dimensions are approximate