



108 Buttenshaw Drive Austinmer NSW

4 2 2

tranquil | renovated | space

Positioned on the leafy Buttenshaw Drive in the heart of Austinmer, this stylishly renovated, single-level family home is perfect for those looking to embrace nature and enjoy spacious and private family living. Set on 1,442m<sup>2</sup> of land and surrounded by natural bushland with incredible scenery and ocean stretching views, all while being moments away from iconic local beaches, this is a property that is rare to come by.

what you will love...

> single-level, four-bedroom family home, located on a

[For full version visit the website](https://www.mcneice.com.au)

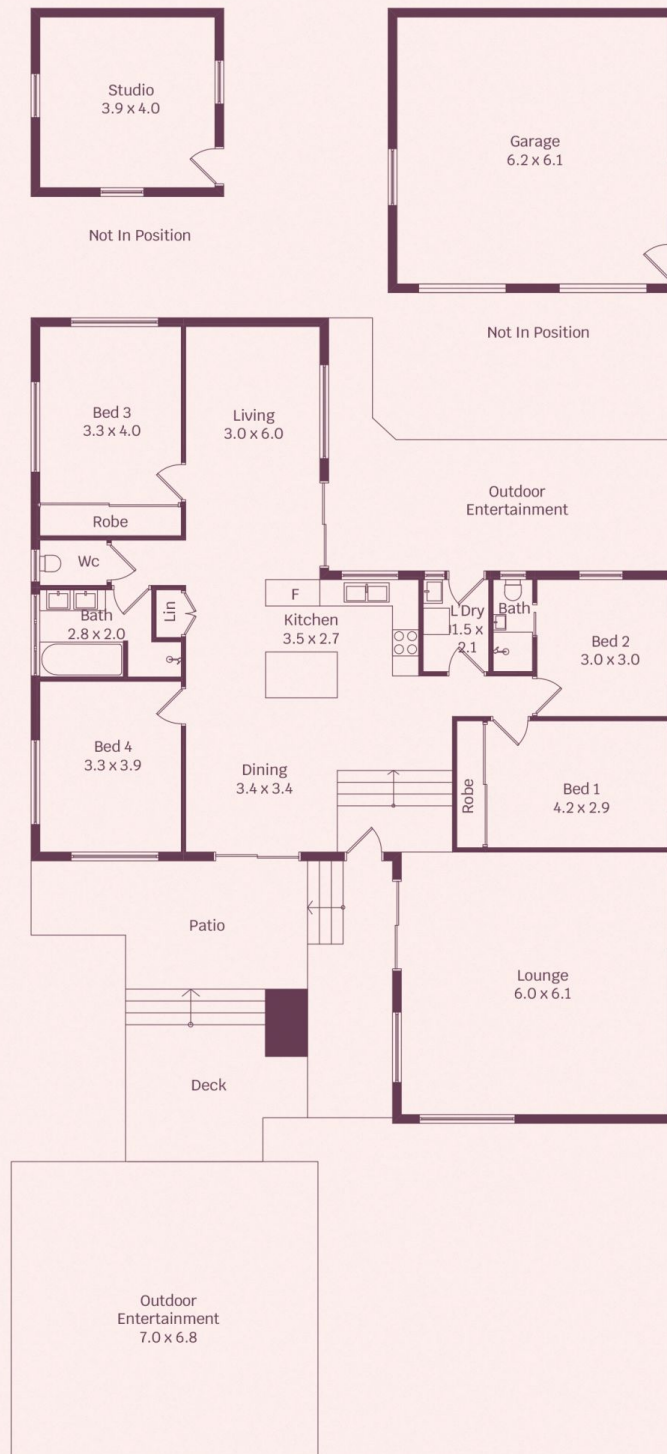
**Type** : House  
**Price** : \$ 2,300,000  
**Land Size** : 1442 sqm  
**View** : <https://www.mcneice.com.au/8484839>



**David Hyslop**  
02 4284 8536

108 Buttenshaw Drive, Austinmer

molenaar × mcneice



HOUSE INTERNAL AREA 163m<sup>2</sup>

HOUSE OVERALL AREA 331m<sup>2</sup>

Plans shown are for presentation purposes and  
are not part of any legal document.

Dimensions are approximate