

19A Sheridan Crescent Stanwell Park NSW

3 2 2

lush | modern | space

INSPECTION BY APPOINTMENT ONLY

Located in the picturesque seaside suburb of Stanwell Park, this contemporary 3-bedroom home offers a stunning street presence complete with lush surrounds. Sit back, unwind and enjoy the scenic views on the front deck and when the temperatures drop, you can cozy up in front of the original fireplace in the lounge room. This is an extraordinary opportunity to secure your own slice of paradise in Stanwell Park.

what you will love...

[For full version visit the website](https://www.mcneice.com.au/8484808)

Type : House
Price : \$ 1,800,000
Land Size : 593 sqm
View : <https://www.mcneice.com.au/8484808>



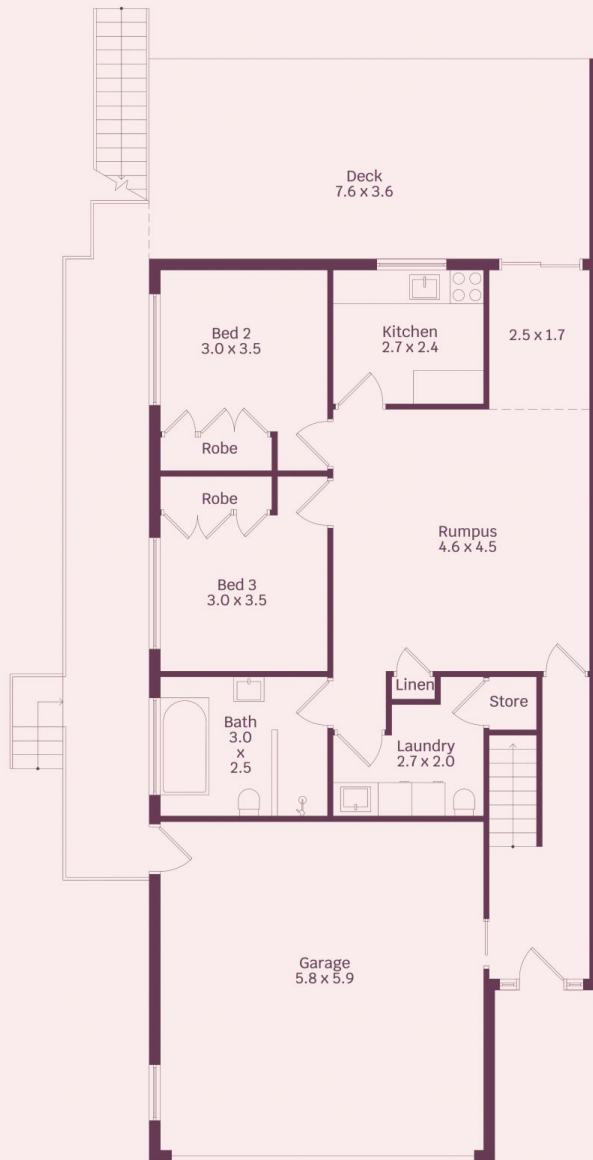
David Hyslop
02 4284 8536



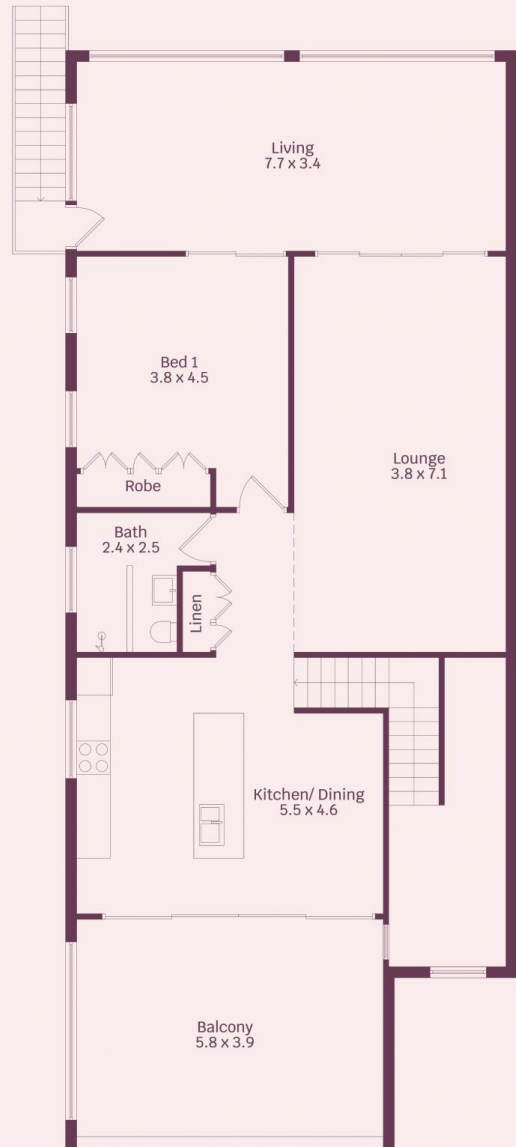
James O'Donoghue
02 4284 8536

19A Sheridan Crescent,
Stanwell Park

molenaar × mcneice



Ground Floor



First Floor



HOUSE INTERNAL AREA 255m²
HOUSE OVERALL AREA 330m²

Plans shown are for presentation purposes and
are not part of any legal document.

Dimensions are approximate