

## 41 Sheringa Grove Cordeaux Heights NSW

3 2 2

tranquil | family | location

This three-bedroom, two-bathroom, spacious elevated family home occupies a large block in a quiet cul-de-sac. Conveniently located in the family orientated suburb of Cordeaux Heights, this home is ready to move straight in.

what you will love...

- > quiet cul-de-sac and large north/south block with views
- > large kitchen with U-shape benchtops and ample cupboards
- > two separate living areas, combining dining and family areas

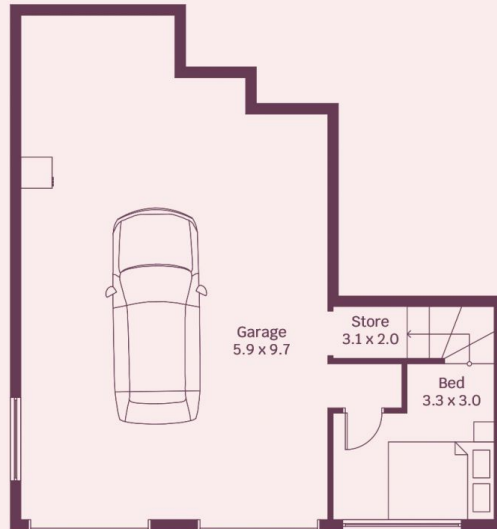
[For full version visit the website](https://www.mcneice.com.au)

**Type** : House  
**Land Size** : 827 sqm  
**View** : <https://www.mcneice.com.au/8484802>

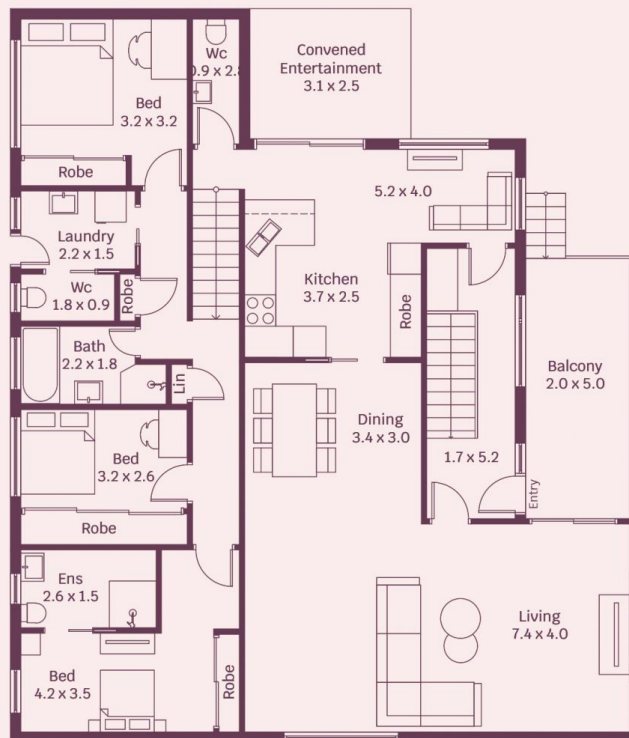


**David Hyslop**  
02 4284 8536

41 Sheringa Grove, Cordeaux Heights



Ground Floor



First Floor



HOUSE INTERNAL AREA 202m<sup>2</sup>

Plans shown are for presentation purposes and are not part of any legal document.

Dimensions are approximate