



72 Robertson Street Coniston NSW

4 🛏 2 🚿 5 🚗

size | potential | views

Perched on an expansive 696sqm parcel with a sun drench north facing rear with escarpment views, this generous home is ideal for those looking for a flexible floorplan in a conveniently locale. This four-bedroom home is positioned in a family orientated street, offering a blank canvas all while being centrally located with a short walk to public transport and a 3 minute drive to Wollongong CBD.

what you will love...

> first floor with three bedrooms of accommodation, two with built in robes

[For full version visit the website](https://www.mcneice.com.au)

Type : House
Price : \$ 1,050,000
Land Size : 696 sqm
View : <https://www.mcneice.com.au/8484797>



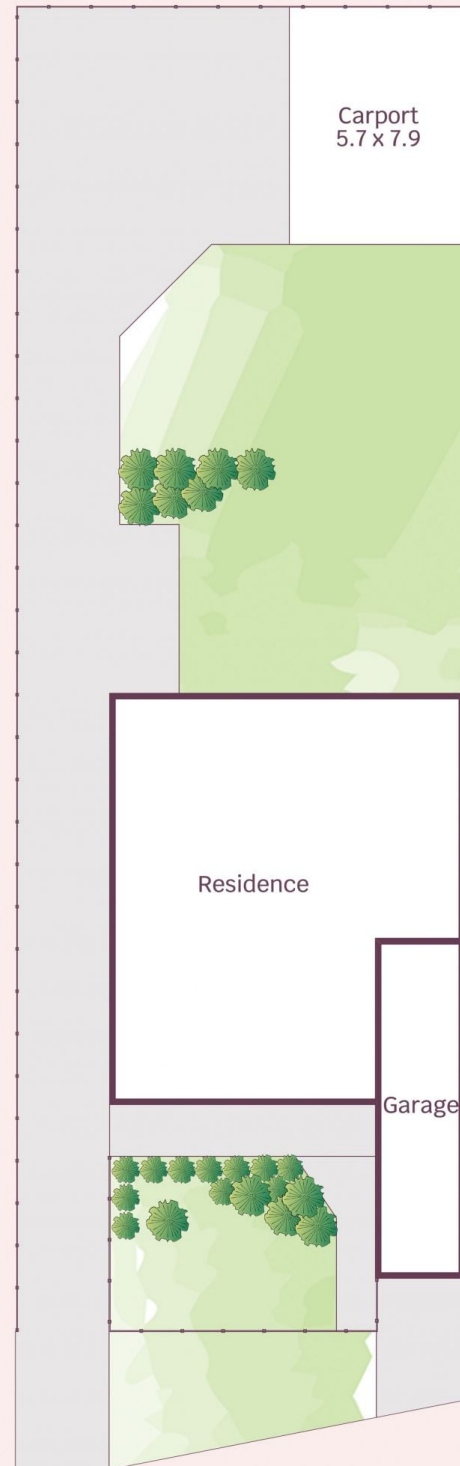
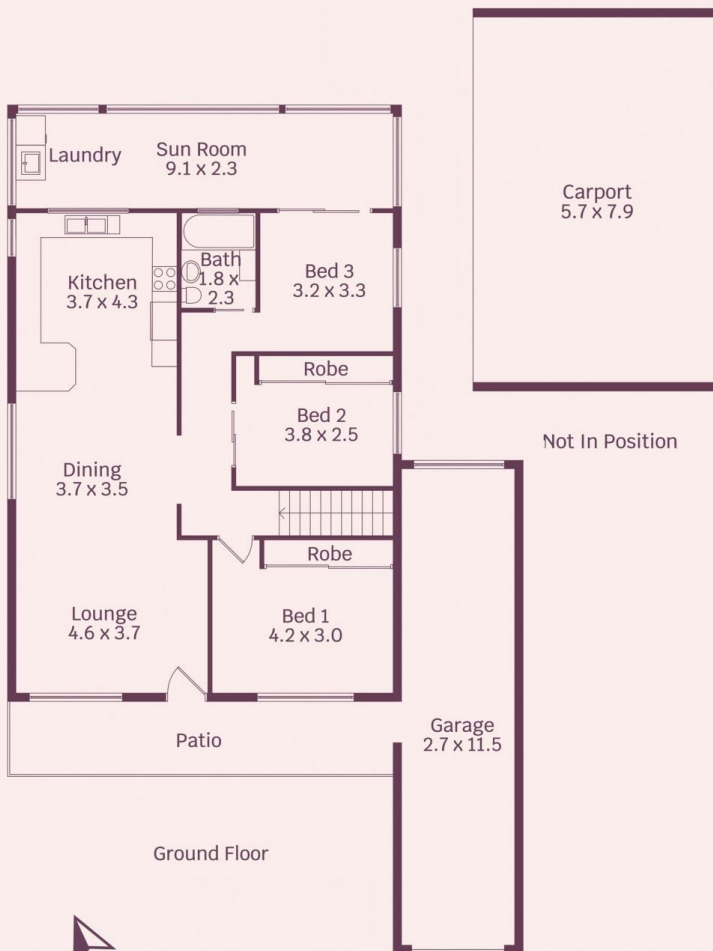
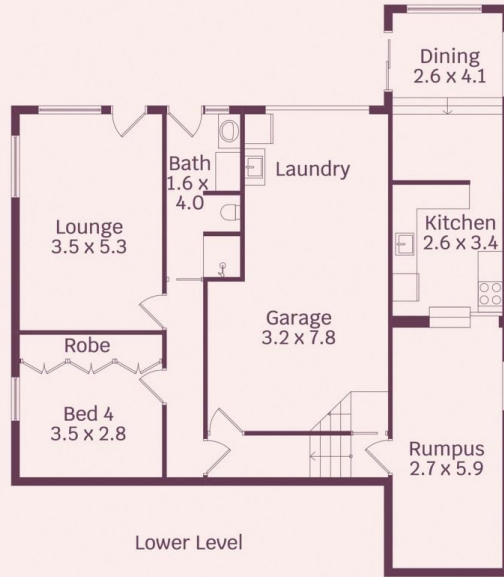
Daniel Mulholland
02 4284 8536



Danny Peterson
02 4284 8536

72 Robertson Street, Coniston

molenaar × mcneice



HOUSE INTERNAL AREA 277m²
HOUSE OVERALL AREA 341m²

Plans shown are for presentation purposes and are not part of any legal document.

Dimensions are approximate