



1105/10 Regent Street Wollongong NSW

2 2 1

views | location | amenities

'The Signature' Wollongong has set the benchmark for high-rise living in the heart of the city. Meticulously finished with uninterrupted views to the north and east as far as the eye can see, this residence enjoys all the conveniences of central Wollongong and boasts a lifestyle offered like never before. Residents have access to a plethora of amenities including rooftop pool, gym, theatre, function areas and convenient concierge service.

what you will love...

> two bedrooms of accommodation with built in robes and

[For full version visit the website](https://www.mcneice.com.au)

**Type** : Apartment

**Price** : \$ 840,000

**View** : <https://www.mcneice.com.au/8484791>



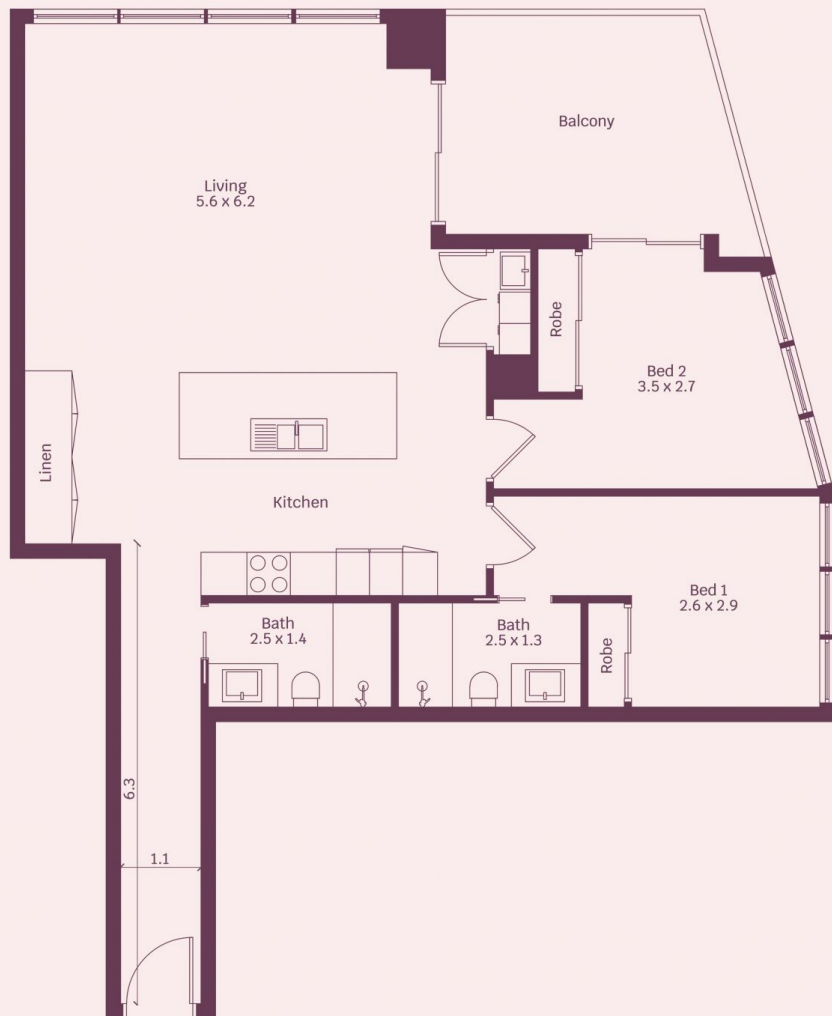
**Daniel Mulholland**  
02 4284 8536



**Danny Peterson**  
02 4284 8536

1105/10 Regent Street, Wollongong

molenaar × mcneice



HOUSE INTERNAL AREA 86m<sup>2</sup>  
HOUSE OVERALL AREA 114m<sup>2</sup>

Plans shown are for presentation purposes and are not part of any legal document.

Dimensions are approximate