



2/32 Ash Avenue Albion Park Rail NSW

3 1 2

renovations | size | location

Spacious and updated throughout, this 3-bedroom townhouse is the perfect fit for those seeking house size proportions in a low-maintenance setting. Featuring stylish open-plan living with modern inclusions throughout which connect seamlessly to the outdoor entertainment. Tucked away in a quiet boutique block ideally situated just moments to local shops, parks, transport and Shellharbour village.

what you will love...

> three generous bedrooms of accommodation with built in

[For full version visit the website](https://www.mcneice.com.au/8484776)

Type : Townhouse

Price : \$ 670,000

View : <https://www.mcneice.com.au/8484776>

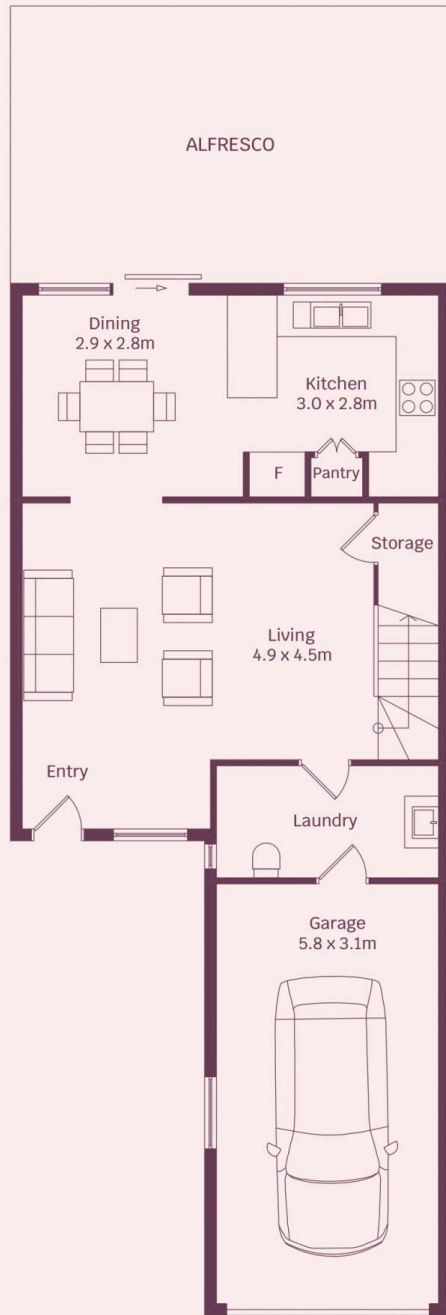


Daniel Mulholland
02 4284 8536

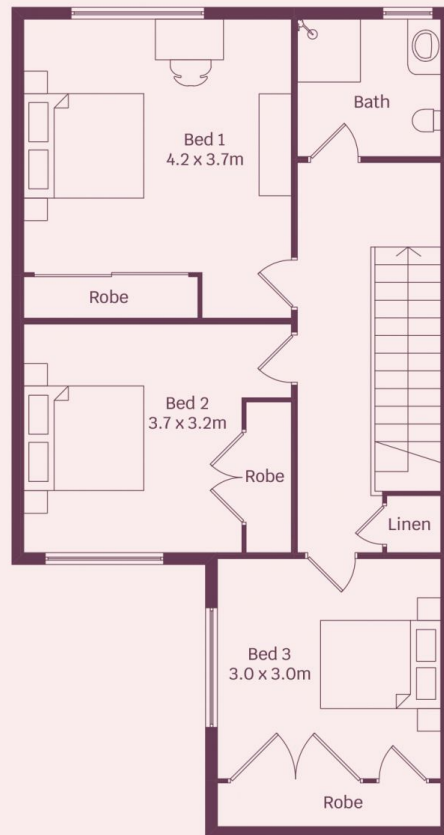


Emre Hasdiraz
02 4284 8536

2/32 Ash Avenue, Albion Park Rail



GROUND FLOOR



FIRST FLOOR



HOUSE INTERNAL AREA 75m²

Plans shown are for presentation purposes and are not part of any legal document.

Dimensions are approximate