



27 Mountain Avenue Woonona NSW

4 🛏 2 🚿 2 🚗

character | light-filled | entertaining

A stylish contemporary cottage combining the perfect balance of character features with modern updates and family functionality. With a beautiful open-plan layout which seamlessly blends to impressive outdoor entertainment. This home promises a lifestyle of convenience within walking distance of popular Woonona cafes and restaurants.

what you will love?

> picture-perfect façade with a beautifully landscaped front & back garden

[For full version visit the website](https://www.mcneice.com.au/8484774)

Type : House
Land Size : 720 sqm
View : <https://www.mcneice.com.au/8484774>

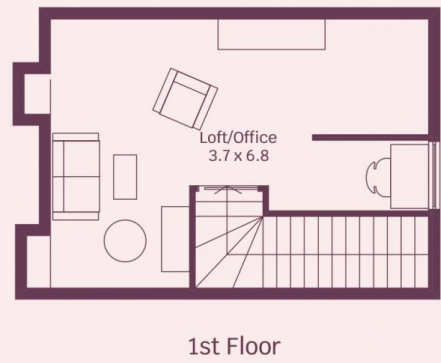
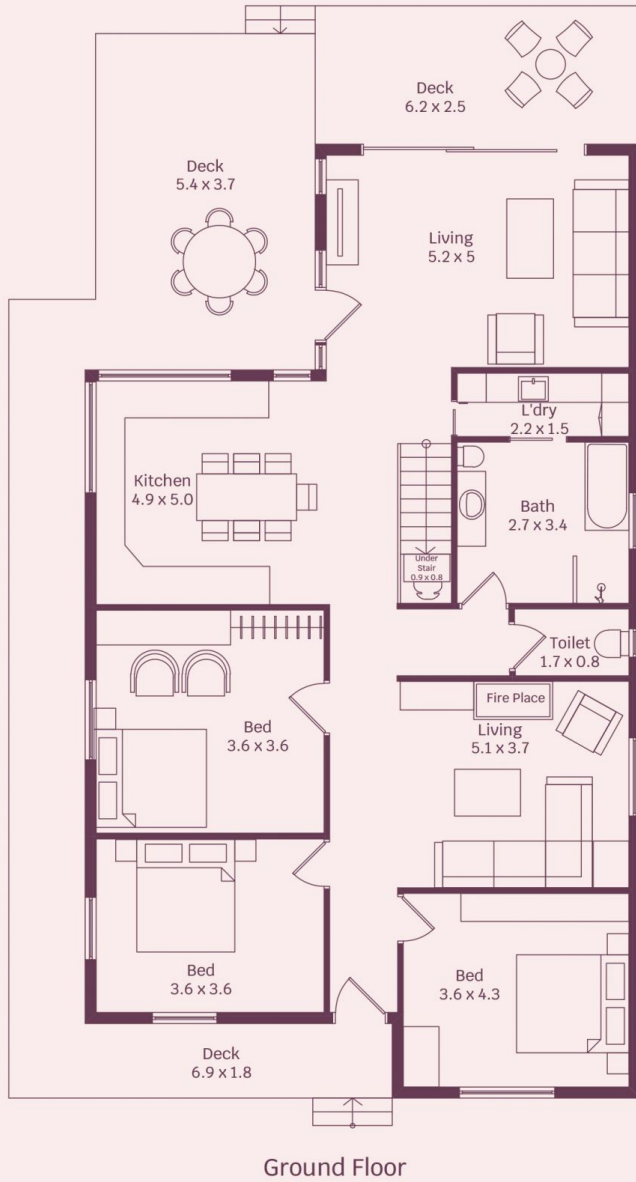


David Hyslop
02 4284 8536



Troy McNeice
02 4284 8536

27 Mountain Avenue, Woonona



Aspect: East Facing
HOUSE INTERNAL AREA 278m²

Plans shown are for presentation purposes and are not part of any legal document.
Dimensions are approximate

molenaar × mcneice